



## **APPENDIX IV-F**

# **Putnam County Critical Facilities Vulnerability Analysis**

### **CHAPTER IV**

### **REGIONAL VULNERABILITY AND POPULATION ANALYSIS**

**This page intentionally left blank.**

**TABLE OF CONTENTS**  
**APPENDIX IV-F**  
**PUTNAM COUNTY CRITICAL FACILITIES VULNERABILITY ANALYSES**

|    |   |       |
|----|---|-------|
| A. | Introduction .....                              | IV-F1 |
| B. | County Economic Profile .....                   | IV-F1 |
| C. | County Vulnerable Populations Profile.....      | IV-F6 |
| D. | Critical Facilities Vulnerability Analysis..... | IV-F7 |

### Illustrations

|                         |       |
|-------------------------|-------|
| Illustration IVF-1..... | IV-F8 |
|-------------------------|-------|

### List of Tables

|             |   |        |
|-------------|---|--------|
| Table IVF-1 | Putnam County Health Care Vulnerability Assessment.....               | IV-F9  |
| Table IVF-2 | Putnam County Other Critical Facilities Vulnerability Assessment..... | IV-F12 |

### List of Figures/ Maps

|               |  |        |
|---------------|--|--------|
| Figure IVF-1  | Traffic Evacuation Zones (TEZs).....                                       | IV-F16 |
| Figure IVF-2  | Hurricane Evacuation Zones.....  | IV-F17 |
| Figure IVF-3  | FEMA FIRM Floodplains.....   | IV-F18 |
| Figure IVF-4  | Wildland-Urban Interface Fire Risk.....                                    | IV-F19 |
| Figure IVF-5  | Mobile Home Parks.....   | IV-F20 |
| Figure IVF-6  | Health Care Facilities.....  | IV-F21 |
| Figure IVF-7  | Schools and Universities.....  | IV-F22 |
| Figure IVF-8  | Emergency Operation Centers, Logistics, Military & Emergency Services..... | IV-F23 |
| Figure IVF-9  | Communications Resources .....   | IV-F24 |
| Figure IVF-10 | Critical Infrastructure .....  | IV-F25 |
| Figure IVF-11 | Public Evacuation Shelters.....  | IV-F26 |
| Figure IVF-12 | Routes Vulnerable to Freshwater Flooding.....                              | IV-F27 |

This page intentionally left blank.

## A. Introduction

This appendix provides a County Economic Profile, Vulnerability Profile and a more detailed vulnerability analysis of critical facilities and corresponding maps.

## B. County Economic Profile

This section of the report, and the data contained herein, is provided to capture a profile of the county including geographic and economic characteristics not previously discussed in Chapter I. In addition, many of the critical infrastructure partners including private sector and public utilities are identified.

### COUNTY PROFILE

(Source: Enterprise Florida, [www.eflorida.com/profiles](http://www.eflorida.com/profiles) )

#### GEOGRAPHY

County Seat: Palatka  
 Nearest MSA: Jacksonville  
 Time Zone: Eastern  
 Local Area Code(s): 352, 386, 904  
 Largest Cities: 1 Palatka  
 2 Crescent City  
 3 Interlachen



Miles\* To:

|                    |     |
|--------------------|-----|
| Tallahassee .....  | 166 |
| Orlando .....      | 83  |
| Tampa .....        | 131 |
| Jacksonville ..... | 46  |
| Miami .....        | 283 |
| Atlanta .....      | 333 |
| Chicago .....      | 908 |
| Dallas .....       | 920 |
| New York .....     | 878 |

\*Miles are calculated from county seat.

**POPULATION**

|          | Putnam | Florida    |
|----------|--------|------------|
| 1980:    | 50,549 | 9,746,961  |
| 1990:    | 65,070 | 12,938,071 |
| 2009:    | 72,893 | 18,537,969 |
| 2015(p): | 75,400 | 19,881,200 |
| 2030(p): | 79,500 | 23,821,300 |

(p) Denotes Projected Population

**PER CAPITA PERSONAL INCOME**

|      | Putnam   | Florida  |
|------|----------|----------|
| 2006 | \$24,177 | \$38,161 |
| 2007 | \$24,907 | \$39,036 |
| 2008 | \$25,712 | \$39,064 |

**LABOR FORCE**

(2009)

|                                    |        |
|------------------------------------|--------|
| Labor Force                        | 32,308 |
| Labor Force % of County Population | 44.3   |
| Number in County Unemployed        | 3,884  |
| Unemployment Rate                  | 12.0%  |

Monthly labor force data are available from the [Florida Agency for Workforce Innovation](#).

**EMPLOYMENT BY INDUSTRY**

*N/D = No Data*

|                                     | Putnam | Florida   |
|-------------------------------------|--------|-----------|
| (2008)                              |        |           |
| Average Annual Employment           | 18,246 | 7,945,162 |
| Natural Resources & Mining          | 3.4%   | 1.2%      |
| Construction                        | 6.1%   | 6.5%      |
| Trade, Transportation and Utilities | 20.1%  | 20.5%     |
| Manufacturing                       | 11.7%  | 4.7%      |
| Information                         | 0.4%   | 2.0%      |
| Other Services                      | 3.7%   | 3.2%      |
| Public administration               | 10.3%  | 5.9%      |
| Unclassified                        | 0.0%   | 0.1%      |
| Leisure & Hospitality               | 7.9%   | 11.9%     |
| Education & Health Services         | 12.2%  | 19.4%     |

**CLIMATE**

| Average Temperature               | High      | Low |
|-----------------------------------|-----------|-----|
| January:                          | 69        | 47  |
| July:                             | 91        | 73  |
| Florida Mean Annual Precipitation | ..... 53  |     |
| Average Annual Rain Days          | ..... 117 |     |

**MIGRATION**

(2008)

|               |       |
|---------------|-------|
| In-Migration  | 3,232 |
| Out-Migration | 3,523 |
| Net-Migration | -291  |

\*Estimates based on IRS Statistics of Income data

**EXISTING EMPLOYMENT**

Major Private Sector Employers

|  |       |
|--|-------|
| Georgia Pacific                                    |       |
| <b>Business Line:</b> Pulp and paper               |       |
| <b>Number of Employees</b> .....                   | 1,040 |
| Putnam Community Medical Center                    |       |
| <b>Business Line:</b> Hospital                     |       |
| <b>Number of Employees</b> .....                   | 530   |
| Wal-Mart   |       |
| <b>Business Line:</b> Retail                       |       |
| <b>Number of Employees</b> .....                   | 525   |
| Georgia Pacific                                    |       |
| <b>Business Line:</b> Plywood                      |       |
| <b>Number of Employees</b> .....                   | 430   |
| Precision Response Corporation                     |       |
| <b>Business Line:</b> Customer Service Call Center |       |
| <b>Number of Employees</b> .....                   | 400   |

|                                  |      |       |
|----------------------------------|------|-------|
| Professional & Business Services | 6.9% | 14.4% |
| Financial Activities             | 4.3% | 6.6%  |

Seminole Electric Corporation  
**Business Line:** Electric power generation  
**Number of Employees**..... 280

Average Annual Wage

(2008)

|                                     |          |
|-------------------------------------|----------|
| All Industries                      | \$32,595 |
| Construction                        | \$27,822 |
| Education & Health Services         | \$32,631 |
| Financial Activities                | \$36,136 |
| Information                         | \$48,505 |
| Leisure & Hospitality               | \$12,859 |
| Manufacturing                       | \$49,211 |
| Natural Resources & Mining          | \$19,868 |
| Other Services                      | \$19,668 |
| Professional & Business Services    | \$23,295 |
| Public administration               | \$42,920 |
| Trade, Transportation and Utilities | \$29,910 |
| Unclassified                        | \$15,870 |

Palatka Heath Care Center  
**Business Line:** Nursing home  
**Number of Employees**..... 215

PDM Bridge  
**Business Line:** Structural steel fabrication  
**Number of Employees**..... 150

Family Medical & Dental Center  
**Business Line:** Healthcare  
**Number of Employees**..... 146

CDR Systems  
**Business Line:** Underground fiberglass vaults  
**Number of Employees**..... 120

**TRANSPORTATION**

|                     |  |  |                                      |
|---------------------|--|--|--------------------------------------|
| Federal Interstates | I-95                                       | Nearest Airport with Scheduled Commerical Airline Service: | Gainesville Municipal                |
| Federal Highways    | US-17                                      | # Runways  | 2                                    |
| State Highways      | SR-19, SR-20, SR-21, SR-26, SR-100, SR-207 | Longest Paved Runway(ft.)                                  | 8000                                 |
| Railroads           | CSX  | General Aviation Airports                                  | Palatka Kay Larkin Municipal Airport |
|                     |  | Local Deep Water Port                                      |                                      |
|                     |  | Miles to Closest Port                                      | 60                                   |

**STATE AND LOCAL TAXATION**

| COUNTY                               |         | STATE                |      |
|--------------------------------------|---------|----------------------|------|
| Countywide Ad Valorem Millage Rates: |         |                      |      |
| Government                           | 8.5765  | Corporate Income Tax | 5.5% |
| Schools                              | 7.8130  | Personal Income Tax  | 0.0% |
| Special                              | 0.0000  | Retail Sales Tax     | 6.0% |
| Total                                | 16.3895 |                      |      |
| <hr/>                                |         |                      |      |
| Ad Valorem Tax Exemption:            | No      |                      |      |
| Retail Sales Tax (Local Option)      | 1.00    |                      |      |

Federal Enterprise Zone No  
 State Enterprise Zone EZ-5401

**COMMERCIAL/INDUSTRIAL SERVICES**

Electric Companies:

- Florida Power & Light Company
- Clay Electric Cooperative

Natural Gas Companies:

- Palatka Gas Authority
- City of Crescent City

Telephone Companies:

- AT&T
- Windstream

Water & Sewer Companies:

- City of Palatka
- City of Crescent City

Existing Industrial Zoned Land Yes  
 Number of Acres 2,580  
 Largest Available Contiguous Parcel 680

Industrial Parks Yes  
 Number of Acres 274  
 Largest Available Contiguous Parcel 45

Foreign Trade Zones No  
 Zone Number(s)

**MEDIA**

Local Radio Stations:

- WPLK 900 AM
- WIYD 12.60 AM
- WHIF 91.3

Local Television Stations:

- WJGV

**EDUCATION**

|             | Public Schools | Teachers | Enrollments |
|-------------|----------------|----------|-------------|
| Elementary: | 46             | 315      | 6,106       |
| Secondary:  | 45             | 245      | 5,705       |
| Totals:     | 91             | 560      | 11,811      |

Private Schools Available: Yes

POST SECONDARY EDUCATION SERVING THE COUNTY:

Colleges/Universities:

- none listed

Junior/Community Colleges:

- St. Johns River Community College
- Florida College of the Arts
- St. Leo College

Vocational/Technical Schools:

- First Coast Technical College

Other Schools:

- none listed

**FINANCIAL INSTITUTIONS**

Number of Banks: 7

Number of Savings and Loans: 0

Number of Credit Unions: 3

Locally Printed Newspapers:

- Palatka Daily News
- Putnam Pennysaver
- Courier Journal

**QUALITY OF LIFE**

|                                  |        |
|----------------------------------|--------|
| Cost of Living                   |        |
| <b>Price Level Index, (2007)</b> |        |
| Florida State Average = 100      |        |
|                                  | Sample |
| Total                            | 87.91  |
| Food                             | 99.53  |
| Housing                          | 78.20  |
| Medical Care                     | 84.40  |
| Personal Goods and Services      | 93.28  |
| Transportation                   | 97.32  |

Medical Services:

- Family Medical & Dental Center
- Putnam Community Medical Center

Recreational Opportunities:

- Dunn's Creek State Park
- Fishing, Hunting, Hiking, Canoeing, Horseback Riding, etc.
- Live Oak Golf & Country Club
- Ocala National Forest
- Palatka Municipal Golf Course
- Putnam County Recreation Dept. (Baseball, Football, Tennis)
- Ravine Gardens State Park

Historical Points Of Interest:

- Bronson Mullholland House
- David Browning Railroad Museum
- Fort Gates Ferry
- Little Blue House Heritage Museum & Arts Center
- Mt. Royal Indian Temple Mound
- Palatka Historic Districts (North & South)
- Tilghman House

Cultural Events/Festivals:

- Azalea Festival
- Blue Crab Festival
- Blue Grass Festival
- Bostwick Blueberry Festival
- Catfish Festival
- Putnam County Fair

## C. County Vulnerable Population Profile

(Source: Florida Dept. of Health, 2010)

### County Vulnerable Population Profile

County: Putnam

#### Demographic Indicators

2009 County Population Estimate<sup>1</sup>- 75,348

65-84 Population<sup>1</sup>- 12,905

Live Births (3yr count)<sup>1</sup>- 3,183

85+ Population<sup>1</sup>- 1,625

% of Population 65+- 19%

#### Economic Indicators

Population Below Poverty<sup>1</sup>- 15,560

Average Monthly  
Medicaid Enrollment<sup>1</sup>- 16,138

Food Stamp Recipients<sup>7</sup>- 14,186

Uninsured (Under 65)<sup>1</sup>- 12,030

WIC Enrollment<sup>1</sup>- 3,391

#### Vulnerability Indicators

Population with 1  
or more disabilities<sup>2</sup>- 19,711

Brain &/or Spinal  
Cord Injured Clients<sup>5</sup>- 7

% of Population with 1  
or more disabilities- 26%

Estimated Oxygen  
Dependent Clients- 1,250

Elders Living Alone<sup>8</sup>- 4,780

Elders with Dementia<sup>8</sup>- 2,287

Estimated Homeless<sup>7</sup>- 789

CMS Clients<sup>6</sup>- 524

Children in Foster Care<sup>7</sup>- 92

Medical Foster Care Children<sup>7</sup>- 1

Developmentally Disabled<sup>4</sup>- 359

Dialysis Clients<sup>3</sup>- 104

Seriously Mentally  
Ill Adults<sup>7</sup>- 3,095

Seriously Emotionally  
Disturbed Children<sup>7</sup>- 1,386

Version 1 June 2009 1

## D. Critical Facility Vulnerability Analysis

Considerable staff resources were expended to update the critical facilities inventory. Specific attention was paid to health care facilities such as hospitals and nursing homes; emergency response agencies, hazardous materials, mobile home parks, schools and colleges and community centers. Where possible, communications resources and community infrastructure /utilities such as water and waste-water facilities were located by latitude and longitude and overlaid on the storm tide limits map. Each facility has the name, location, lat/long coordinates, description, critical code and results of the 2010 surge analysis based on the most accurate topographic data and the SLOSH model.

The Critical Facility Inventory (Data base) includes a comprehensive list of critical facilities identified by the State and County Emergency Management Agencies. This inventory is not published as part of the report. However, selected facilities which may require evacuation or mitigation are identified in the tables and maps which follow. The tables indicate vulnerability from storm surge (based on the SLOSH model), freshwater flooding (based on the FEMA Flood Maps) and wildfire (Wildfire Interface/Levels of Concern).

The illustration identifies the potential storm surge heights on county landmarks. These illustrations are provided for public information purposes only.

Illustration IVF-1  
St. Paul's Episcopal Church, Federal Point



Category 5  
Category 4  
Category 3

1.3 ft  
1.0 ft  
0.0 ft

**Table IVF-1  
Putnam County Health Care Vulnerability Assessment**

| Facility Type          | Name                                     | Address                 | City          | Zip   | DEM Elevation | Surge | Evac Zone | Flood | Fire |
|------------------------|--|-------------------------|---------------|-------|---------------|-------|-----------|-------|------|
| Adult Family Care Home | MOBLEY, SHIRLEY                          | 2101 EDMORE STREET      | PALATKA       | 32177 | 70.74         | 0     | X         | OUT   | Y    |
| ALF                    | APPLE HOUSE I                            | 422 PLEASANT STREET     | POMONA PARK   | 32181 | 59.52         | 0     | X         | OUT   | Y    |
| ALF                    | APPLE HOUSE II                           | 2301 S. HWY. 17         | CRESCENT CITY | 32112 | 34.07         | 0     | X         | OUT   | Y    |
| ALF                    | ARLINGTON HOUSE ACLF                     | 203 S MOODY ROAD        | PALATKA       | 32177 | 67.01         | 0     | X         | OUT   | N    |
| ALF                    | FIVE OAKS REST HOME                      | 611 OLD WELAKA ROAD     | WELAKA        | 32193 | 24.83         | 0     | X         | OUT   | N    |
| ALF                    | HUSSON AVENUE APARTMENTS-ARC             | 110 - 112 HUSSON AVENUE | PALATKA       | 32177 | 69.90         | 0     | X         | OUT   | Y    |
| ALF                    | KENNEDY STREET HOME - ARC                | 2901 KENNEDY STREET     | PALATKA       | 32177 | 69.67         | 0     | X         | OUT   | N    |
| ALF                    | KIVA OF PALATKA                          | 201 ZEAGLER DRIVE       | PALATKA       | 32177 | 60.75         | 0     | X         | OUT   | Y    |
| ALF                    | SILVER LAKE HOME - ARC                   | 3004 SILVERLAKE DRIVE   | PALATKA       | 32177 | 58.65         | 0     | X         | OUT   | Y    |
| ALF                    | TYRRELL OAKS ARC                         | 2201 HUSSON AVENUE      | PALATKA       | 32177 | 70.37         | 0     | X         | OUT   | Y    |
| ALF                    | WESTOVER HOME - ARC                      | 1717 WESTOVER DRIVE     | PALATKA       | 32177 | 73.18         | 0     | X         | OUT   | Y    |
| Clinical Laboratory    | AMERIPATH CENTRAL FLORIDA ORAL PATHOLOGY | 246 CRYSTAL COVE DIRVE  | PALATKA       | 32177 | 11.44         | 0     | X         | OUT   | Y    |
| Clinical Laboratory    | AMERIPATH FLORIDA LLC AT SKIN SURGERY CE | 310 S PALM AVE STE 10   | PALATKA       | 32177 | 68.21         | 0     | X         | OUT   | N    |
| Clinical Laboratory    | CRESCENT CITY FAMILY MEDICAL CENTER      | 306 UNION AVENUE        | CRESCENT CITY | 32112 | 52.08         | 0     | X         | OUT   | Y    |
| Clinical Laboratory    | INTERLACHEN FAMILY MEDICAL CENTER        | 1213 HIGHWAY 20         | INTERLACHEN   | 32148 | 22.97         | 0     | X         | OUT   | N    |
| Clinical Laboratory    | JACK M MATHENY II MD                     | 205 ZEAGLER DR #101     | PALATKA       | 32177 | 60.75         | 0     | X         | OUT   | Y    |
| Clinical Laboratory    | KID'S CARE PEDIATRICS PA                 | 6910 OLD WOLF BAY ROAD  | PALATKA       | 32177 | 57.35         | 0     | X         | 100   | Y    |

| Facility Type           | Name                                  | Address                | City          | Zip   | DEM Elevation | Surge | Evac Zone | Flood | Fire |
|-------------------------|---------------------------------------|------------------------|---------------|-------|---------------|-------|-----------|-------|------|
| Clinical Laboratory     | LAKESIDE FAMILY PRACTICE              | 921 N SUMMIT STREET    | CRESCENT CITY | 32112 | 50.69         | 0     | X         | OUT   | N    |
| Clinical Laboratory     | LIFESOUTH COMMUNITY BLOOD CENTERS INC | 6003 CRILL AVENUE      | PALATKA       | 32177 | 66.98         | 0     | X         | OUT   | Y    |
| Clinical Laboratory     | MIGUEL G DEJUK MD                     | 800 ZEAGLER DRIVE      | PALATKA       | 32177 | 63.25         | 0     | X         | OUT   | Y    |
| Clinical Laboratory     | PALATKA FAMILY MEDICAL CENTER         | 1302 RIVER STREET      | PALATKA       | 32177 | 53.97         | 0     | X         | OUT   | Y    |
| Clinical Laboratory     | PUTNAM CLINICAL LABORATORIES INC      | 700 ZEAGLER DR STE 8   | PALATKA       | 32177 | 63.94         | 0     | X         | OUT   | N    |
| Clinical Laboratory     | PUTNAM COMMUNITY MEDICAL CENTER LLC   | HWY 20 W               | PALATKA       | 32177 | 21.12         | 0     | X         | OUT   | N    |
| Clinical Laboratory     | PUTNAM COUNTY PUBLIC HEALTH UNIT      | 2801 KENNEDY STREET    | PALATKA       | 32177 | 76.39         | 0     | X         | OUT   | N    |
| Clinical Laboratory     | PUTNAM HEART CENTER PA                | 6710 OLD WOLF BAY ROAD | PALATKA       | 32177 | 60.22         | 0     | X         | OUT   | Y    |
| Clinical Laboratory     | PUTNAM OBSTETRICS & GYNECOLOGY        | 700 ZEAGLER DR 10      | PALATKA       | 32177 | 63.94         | 0     | X         | OUT   | N    |
| Clinical Laboratory     | SOUTHEASTERN PATHOLOGY ASSOCIATES     | 611 ZEAGLER DRIVE      | PALATKA       | 32177 | 64.12         | 0     | X         | OUT   | Y    |
| Clinical Laboratory     | SOUTHEASTERN PATHOLOGY ASSOCIATES     | 611 ZEAGLER DRIVE      | PALATKA       | 32177 | 64.12         | 0     | X         | OUT   | Y    |
| Clinical Laboratory     | SOUTHEASTERN PATHOLOGY ASSOCIATES     | 611 ZEAGLER DRIVE      | PALATKA       | 32177 | 64.12         | 0     | X         | OUT   | Y    |
| Clinical Laboratory     | SOUTHEASTERN PATHOLOGY ASSOCIATES     | 611 ZEAGLER DRIVE      | PALATKA       | 32177 | 64.12         | 0     | X         | OUT   | Y    |
| End State Renal Disease | BMA OF PALATKA                        | 6541 ST JOHNS AVENUE   | PALATKA       | 32177 | 56.70         | 0     | X         | OUT   | Y    |
| Hospital                | PUTNAM COMMUNITY MEDICAL CENTER       | 20 WEST, PO Box 778    | PALATKA       | 32178 | 64.86         | 0     | X         | OUT   | Y    |

| Facility Type            | Name                       | Address              | City          | Zip   | DEM Elevation | Surge | Evac Zone | Flood | Fire |
|--------------------------|----------------------------|----------------------|---------------|-------|---------------|-------|-----------|-------|------|
| Skilled Nursing Facility | CRESTWOOD NURSING CENTER   | 501 S. PALM AVENUE   | PALATKA       | 32177 | 70.24         | 0     | X         | OUT   | N    |
| Skilled Nursing Facility | LAKWOOD NURSING CENTER     | 100 N. LAKE STREET   | CRESCENT CITY | 32112 | 14.59         | 0     | X         | OUT   | N    |
| Skilled Nursing Facility | PALATKA HEALTH CARE CENTER | 110 KAY LARKIN DRIVE | PALATKA       | 32177 | 56.14         | 0     | X         | OUT   | Y    |

**Table IVF-2  
Putnam County Other Critical Facilities Vulnerability Assessment**

| Facility Type               | Name   | Address                | City          | Zip   | Dem Elev | Evac Zone | Surge | Fire | Flood |
|-----------------------------|--|------------------------|---------------|-------|----------|-----------|-------|------|-------|
| CALL CENTER                 | PUTNAM COUNTY SHERIFF DEPT HEADQUARTERS      | 130 ORIE GRIFFIN BLVD  | PALATKA       | 32177 | 17.51    | X         | 0     | N    | OUT   |
| EMERGENCY MEDICAL SERVICE   | PUTNAM CO EMERG RESCUE SVC                   | 120 ORIE GRIFFIN BLVD  | PALATKA       | 32177 | 18.68    | X         | 0     | N    | OUT   |
| EMERGENCY OPERATIONS CENTER | PUTNAM COUNTY EMERGENCY SERVICES             | 410 S STATE ROAD 19    | PALATKA       | 32177 | 74.35    | X         | 0     | Y    | OUT   |
| FIRE STATION                | 21 ST PRECINCT FIRE STATION                  | 115 TILLMAN ST         | BOSTWICK      | 32007 | 29.53    | X         | 0     | N    | OUT   |
| FIRE STATION                | BARDIN VFD ST 18                             | 107 JOHNS RD           | PALATKA       | 32177 | 25.98    | X         | 0     | Y    | OUT   |
| FIRE STATION                | CRESCENT CITY VFD ST 3                       | 201 N SUMMIT ST        | CRESCENT CITY | 32112 | 50.16    | X         | 0     | N    | OUT   |
| FIRE STATION                | EAST PALATKA VFD ST 6                        | 158 W LOUIS BROER RD   | EAST PALATKA  | 32131 | 16.28    | X         | 0     | Y    | OUT   |
| FIRE STATION                | FLORAHOME-GRANDIN VFD ST 14                  | 201 W OHIO ST          | FLORAHOME     | 32140 | 121.40   | X         | 0     | Y    | OUT   |
| FIRE STATION                | FRANCIS VFD ST 22                            | 7417 CRILL AVE         | PALATKA       | 32177 | 66.21    | X         | 0     | Y    | OUT   |
| FIRE STATION                | FRANCIS VOLUNTEER FIRE DEPARTMENT STATION 22 | 4003 SILVER LAKE DR.   | FRANCIS       | 32177 | 55.85    | X         | 0     | Y    | OUT   |
| FIRE STATION                | GEORGES LAKE AREA FIRE DEPARTMENT            | 685 E HILLSBOROUGH AVE | FLORAHOME     | 32140 | 118.12   | X         | 0     | Y    | OUT   |
| FIRE STATION                | GEORGE'S LAKE VFD ST 16                      | 114 SARASOTA ST        | FLORAHOME     | 32140 | 121.40   | X         | 0     | Y    | OUT   |
| FIRE STATION                | GEORGETOWN FRUITLAND VFD ST 9                | 1411 COUNTY ROAD 309   | GEORGETOWN    | 32139 | 18.27    | B         | 0     | Y    | OUT   |

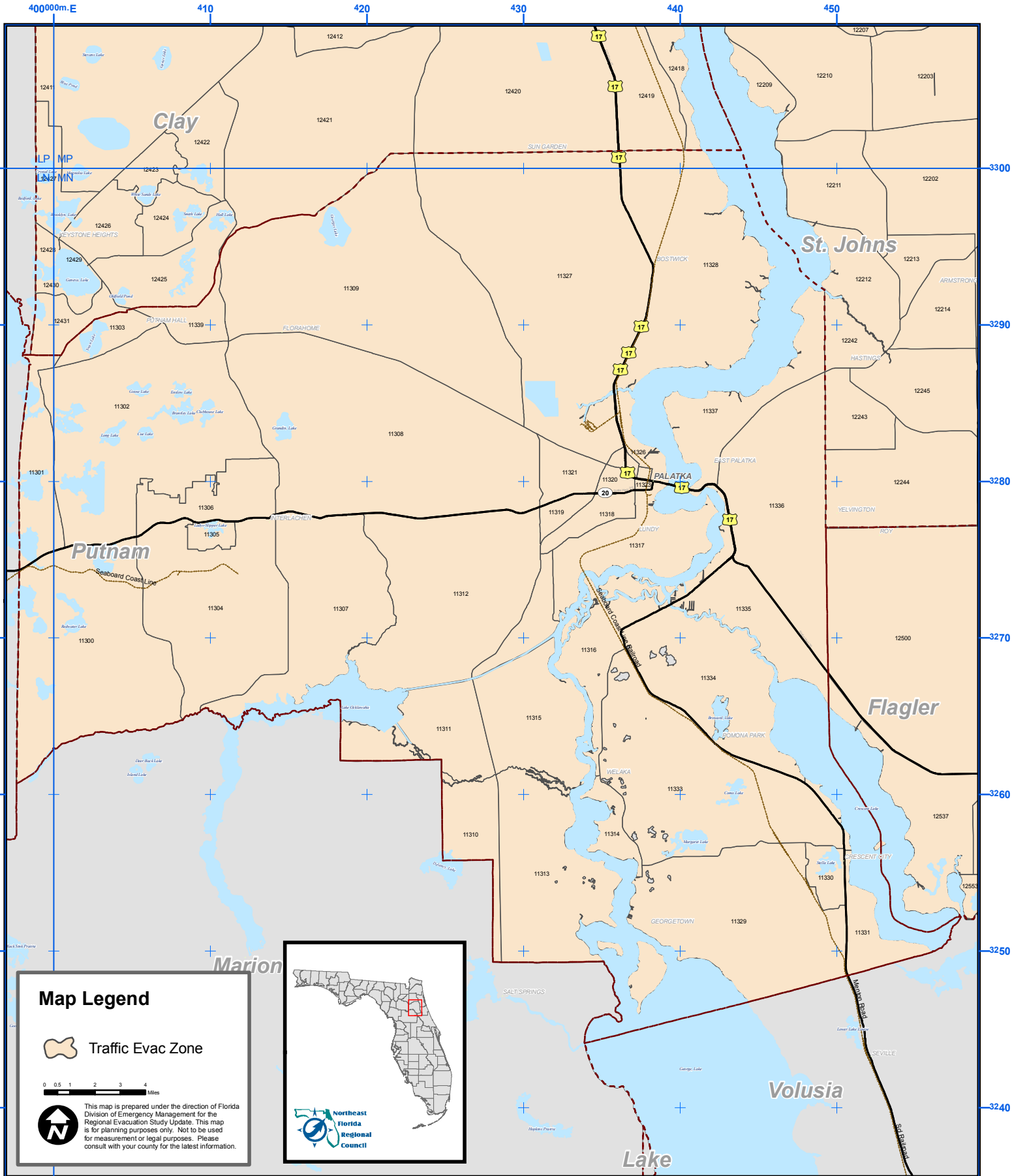
| Facility Type | Name   | Address                      | City        | Zip   | Dem Elev | Evac Zone | Surge | Fire | Flood |
|---------------|--|------------------------------|-------------|-------|----------|-----------|-------|------|-------|
| FIRE STATION  | HASTINGS CITY FIRE DEPT                      | 6195 S MAIN ST               | HASTINGS    | 32145 | 8.76     | C         | 0     | Y    | 500   |
| FIRE STATION  | HOLLISTER FIRE DEPARTMENT                    | 617 N 20TH ST                | PALATKA     | 32177 | 75.46    | X         | 0     | N    | OUT   |
| FIRE STATION  | HOLLISTER VFD ST 13                          | 617 STATE RD 20              | HOLLISTER   | 32147 | 75.46    | X         | 0     | N    | OUT   |
| FIRE STATION  | HOLLISTER VOLUNTEER FIRE DEPARTMENT          | HOOVER ROAD                  | INTERLACHEN | 32148 | 82.03    | X         | 0     | Y    | OUT   |
| FIRE STATION  | INTERLACHEN LAKES ESTATES UNIT 16-17 VFD     | 217 KENNEDY AVE              | INTERLACHEN | 32148 | 183.74   | X         | 0     | Y    | OUT   |
| FIRE STATION  | INTERLACHEN VFD ST 4                         | 200 COMMONWEALTH AVE         | INTERLACHEN | 32148 | 101.71   | X         | 0     | N    | OUT   |
| FIRE STATION  | MELROSE VOLUNTEER FIRE DEPARTMENT STATION 24 | 301 SR 26                    | MELROSE     | 32666 | 157.49   | X         | 0     | Y    | OUT   |
| FIRE STATION  | MELROSE VOLUNTEER FIRE DEPARTMENT STATION 24 | 301 CYPRESS ST               | MELROSE     | 32666 | 157.49   | X         | 0     | Y    | OUT   |
| FIRE STATION  | PALATKA FIRE DEPARTMENT - MAIN STATION       | 100 N 11TH ST                | PALATKA     | 32177 | 21.23    | X         | 0     | N    | OUT   |
| FIRE STATION  | PALATKA FIRE DEPARTMENT - KAY LARKIN STATION | 500 N MOODY RD               | PALATKA     | 32177 | 52.04    | X         | 0     | Y    | OUT   |
| FIRE STATION  | PALATKA FIRE DEPARTMENT STATION 1            | 120-1 ORIE GRIFFIN BOULEVARD | PALATKA     | 32178 | 18.87    | X         | 0     | N    | OUT   |
| FIRE STATION  | PALATKA FIRE DEPARTMENT STATION 13           | 609 STATE ROAD 20            | PALATKA     | 32399 | 72.18    | X         | 0     | N    | OUT   |

| Facility Type   | Name                                    | Address               | City          | Zip   | Dem Elev | Evac Zone | Surge | Fire | Flood |
|-----------------|---|-----------------------|---------------|-------|----------|-----------|-------|------|-------|
| FIRE STATION    | PALATKA FIRE DEPARTMENT STATION 21      | 110 MULBERRY STREET   | PALATKA       | 32178 | 29.53    | X         | 0     | N    | OUT   |
| FIRE STATION    | POMONA PARK LAKE COMO VFD ST 10         | 109 WORCESTER RD      | POMONA PARK   | 32181 | 57.56    | X         | 0     | Y    | OUT   |
| FIRE STATION    | RIVERSIDE AVE ST 19                     | 101 GAIL DR.          | SAN MATEO     | 32187 | 11.89    | X         | 0     | Y    | OUT   |
| FIRE STATION    | SATSUMA VFD ST 23                       | 103 S 1ST ST          | SATSUMA       | 32189 | 72.90    | X         | 0     | N    | OUT   |
| FIRE STATION    | SATSUMA VOLUNTEER FIRE DEPARTMENT       | HOOT OWL ROAD         | SATSUMA       | 32189 | 24.89    | X         | 0     | Y    | 100   |
| FIRE STATION    | SOUTHWEST VFD ST 5                      | 3409 PARK ST          | PALATKA       | 32177 | 53.10    | X         | 0     | Y    | OUT   |
| FIRE STATION    | WALDO FIRE DEPARTMENT                   | 263 2ND ST            | MELROSE       | 32666 | 131.24   | X         | 0     | Y    | OUT   |
| FIRE STATION    | WALEKA VFD ST 12                        | 409 PALMETTO ST       | WELAKA        | 32193 | 25.97    | X         | 0     | N    | OUT   |
| FIRE STATION    | WEST PUTNAM VFD ST 20                   | 104 RACE ST           | HAWTHORNE     | 32640 | 131.24   | X         | 0     | Y    | OUT   |
| LAW ENFORCEMENT | CRESCENT CITY POLICE DEPT HEADQUARTERS  | 115 N SUMMIT ST       | CRESCENT CITY | 32112 | 49.75    | X         | 0     | N    | OUT   |
| LAW ENFORCEMENT | FLORIDA HIGHWAY PATROL TROOP G          | 152 S US HIGHWAY 17   | EAST PALATKA  | 32131 | 13.80    | B         | 0     | Y    | OUT   |
| LAW ENFORCEMENT | INTERLACHEN POLICE DEPT HEADQUARTERS    | 101 MANITOBA AVE      | INTERLACHEN   | 32148 | 114.83   | X         | 0     | Y    | OUT   |
| LAW ENFORCEMENT | PALATKA POLICE DEPT HEADQUARTERS        | 110 N 11TH ST         | PALATKA       | 32177 | 21.22    | X         | 0     | N    | OUT   |
| LAW ENFORCEMENT | PUTNAM COUNTY SHERIFF DEPT HEADQUARTERS | 130 ORIE GRIFFIN BLVD | PALATKA       | 32177 | 17.51    | X         | 0     | N    | OUT   |
| LAW ENFORCEMENT | WELAKA POLICE DEPARTMENT                | 400 4TH AVENUE        | WELAKA        | 32193 | 26.15    | X         | 0     | Y    | OUT   |

| Facility Type              | Name    | Address | City    | Zip | Dem Elev | Evac Zone | Surge | Fire | Flood |
|----------------------------|---------|---------|---------|-----|----------|-----------|-------|------|-------|
| RADIO COMMUNICATIONS TOWER | 999.999 |         |         |     | 59.06    | X         | 0     | N    | OUT   |
| RADIO COMMUNICATIONS TOWER | WGNE-FM |         | PALATKA |     | 3.57     | C         | 3     | N    | 100   |
| RADIO COMMUNICATIONS TOWER | WHIF    |         | PALATKA |     | 10.27    | X         | 0     | Y    | OUT   |
| RADIO COMMUNICATIONS TOWER | WIYD    |         | PALATKA |     | 9.93     | X         | 0     | Y    | OUT   |
| RADIO COMMUNICATIONS TOWER | WPLK    |         | PALATKA |     | 10.27    | X         | 0     | Y    | OUT   |
| TELEVISION                 | WJGV-LP |         | PALATKA |     | 12.18    | X         | 0     | Y    | OUT   |



# Putnam County Map IVF - 1 Traffic Evacuation Zones



**Map Legend**

Traffic Evac Zone

0 0.5 1 2 3 4 Miles

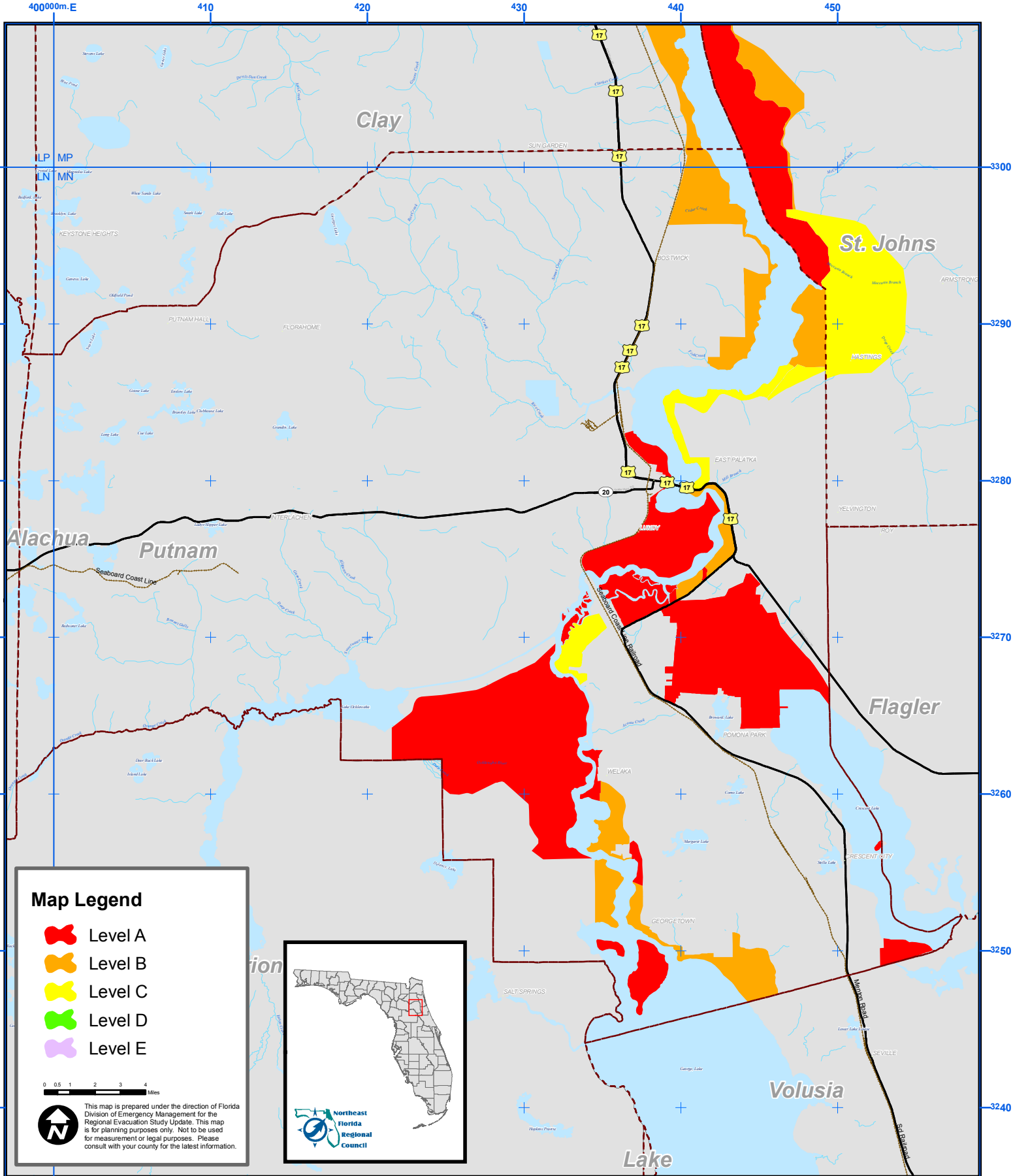
This map is prepared under the direction of Florida Division of Emergency Management for the Regional Evacuation Study Update. This map is for planning purposes only. Not to be used for measurement or legal purposes. Please consult with your county for the latest information.

**Northeast Florida Regional Council**



# Putnam County

## Map IVF - 2 County Hurricane Evacuation Zones

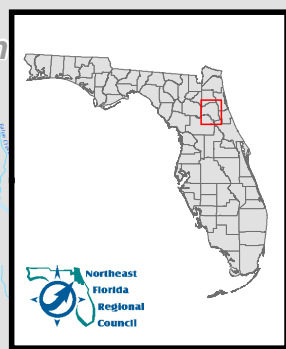


**Map Legend**

- Level A
- Level B
- Level C
- Level D
- Level E

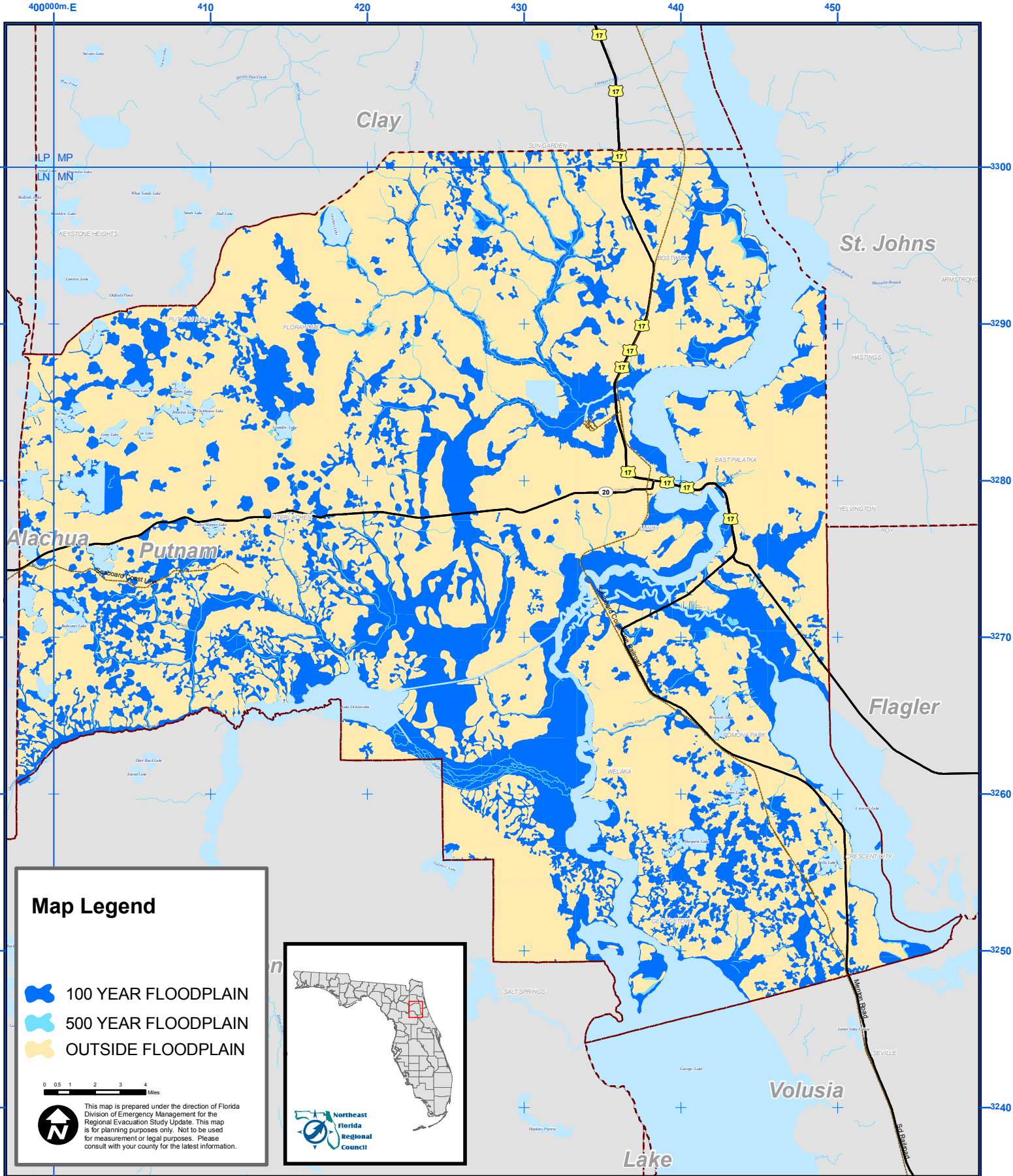
0 0.5 1 2 3 4 Miles

This map is prepared under the direction of Florida Division of Emergency Management for the Regional Evacuation Study Update. This map is for planning purposes only. Not to be used for measurement or legal purposes. Please consult with your county for the latest information.





# Putnam County Map IVF - 3 FEMA FIRM Floodplains



### Map Legend

- 100 YEAR FLOODPLAIN
- 500 YEAR FLOODPLAIN
- OUTSIDE FLOODPLAIN

0 0.5 1 2 3 4 Miles

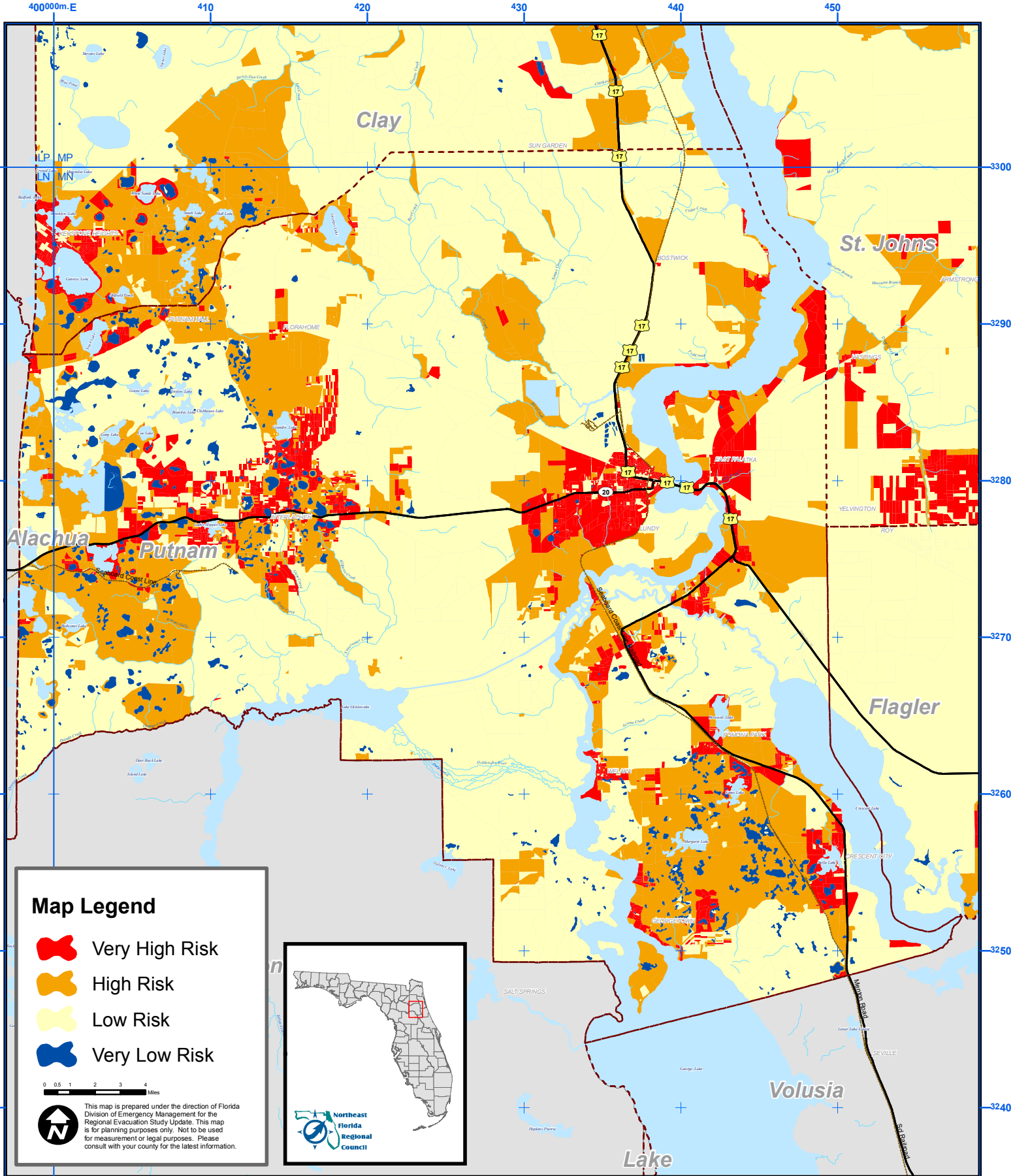
This map is prepared under the direction of Florida Division of Emergency Management for the Regional Evacuation Study Update. This map is for planning purposes only. Not to be used for measurement or legal purposes. Please consult with your county for the latest information.

Northeast Florida Regional Council



# Putnam County

## Map IVF - 4 Wildland-Urban Interface Fire Risk



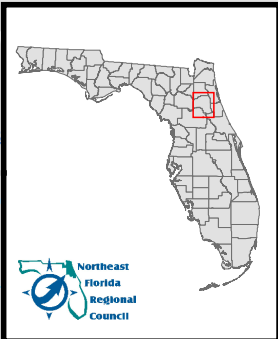
### Map Legend

- Very High Risk
- High Risk
- Low Risk
- Very Low Risk

0 0.5 1 2 3 4 Miles

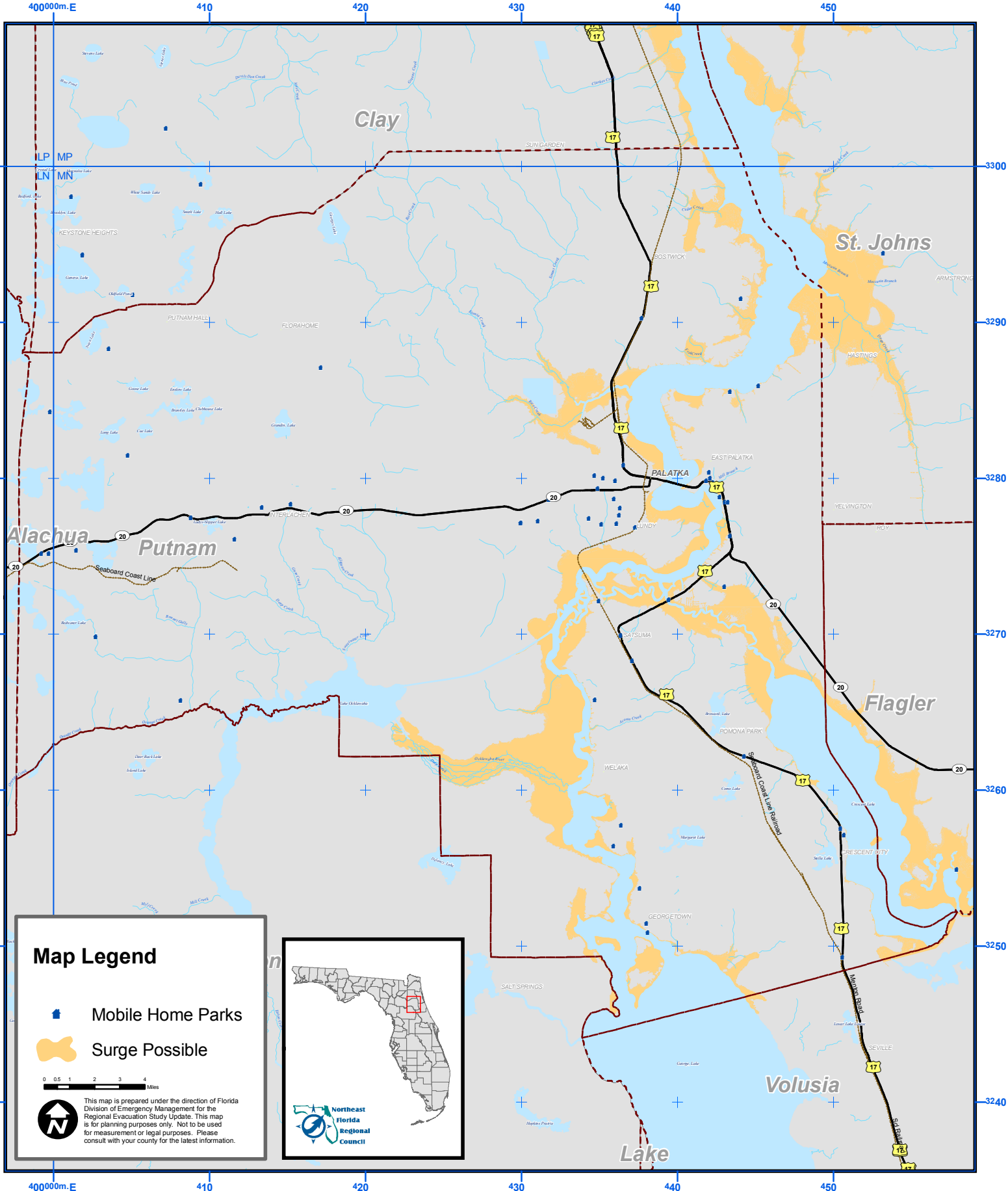


This map is prepared under the direction of Florida Division of Emergency Management for the Regional Evacuation Study Update. This map is for planning purposes only. Not to be used for measurement or legal purposes. Please consult with your county for the latest information.



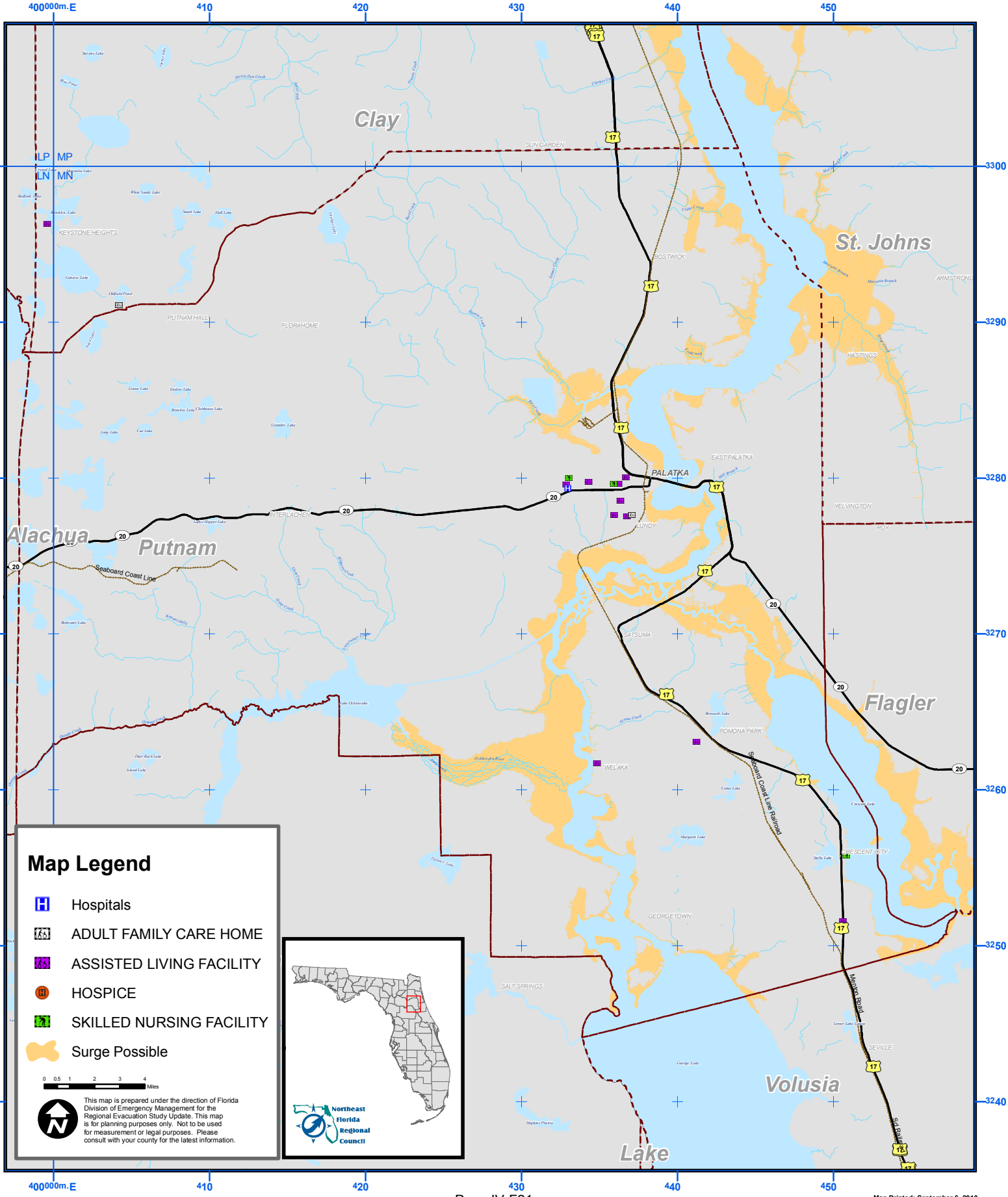


# Putnam County Map IVF - 5 Mobile Home Parks





# Putnam County Map IVF - 6 Health Care Facilities



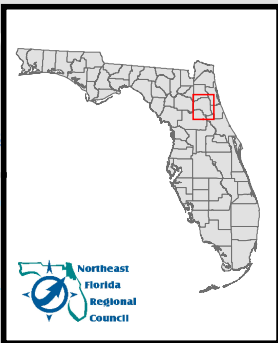
### Map Legend

- Hospitals
- ADULT FAMILY CARE HOME
- ASSISTED LIVING FACILITY
- HOSPICE
- SKILLED NURSING FACILITY
- Surge Possible

0 0.5 1 2 3 4 Miles

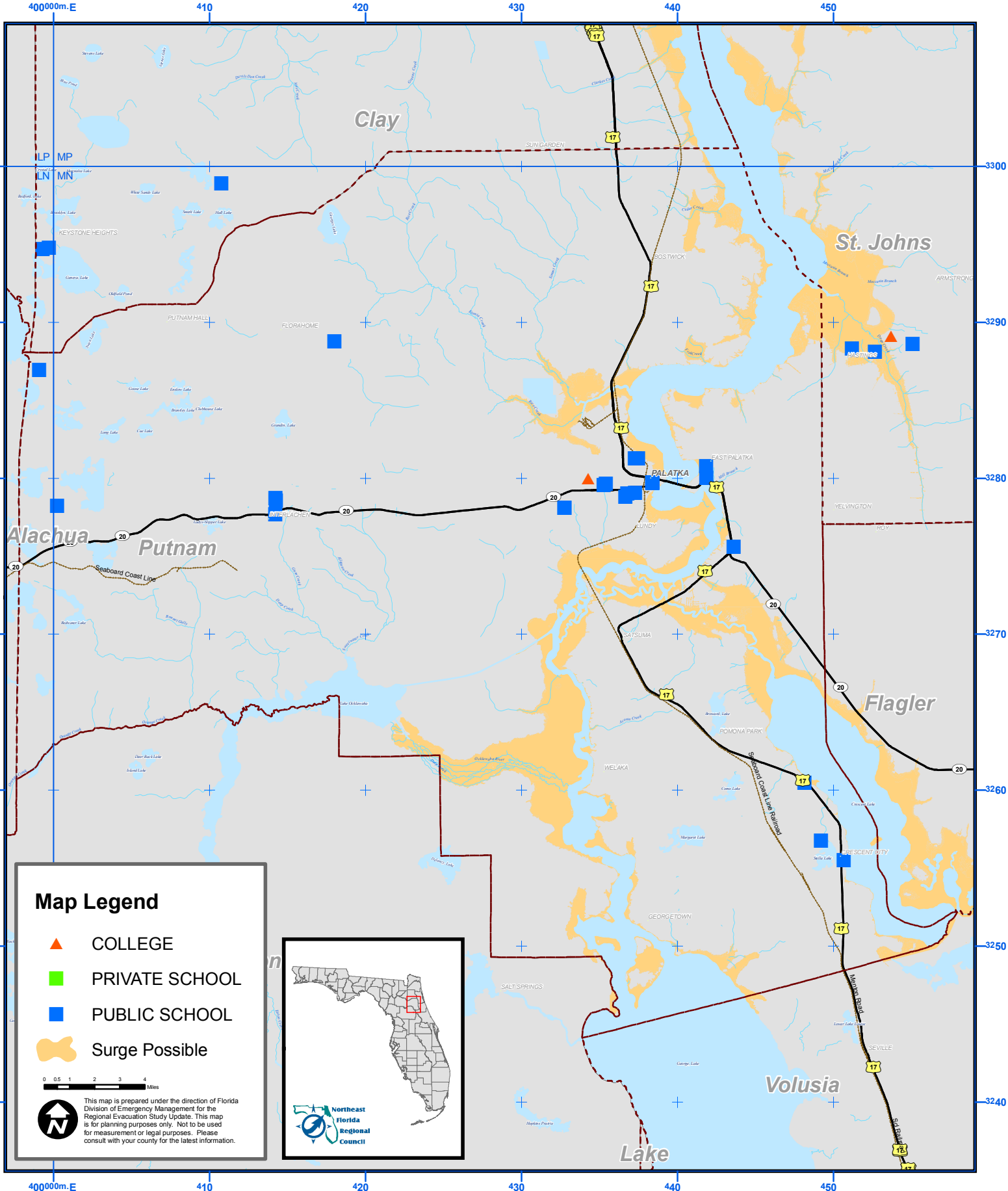


This map is prepared under the direction of Florida Division of Emergency Management for the Regional Evacuation Study Update. This map is for planning purposes only. Not to be used for measurement or legal purposes. Please consult with your county for the latest information.





# Putnam County Map IVF - 7 Schools and Universities

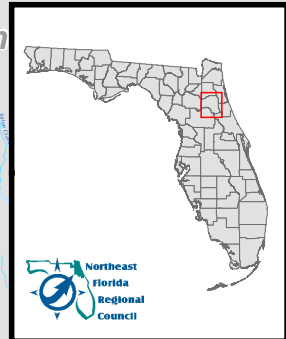


### Map Legend

- ▲ COLLEGE
- PRIVATE SCHOOL
- PUBLIC SCHOOL
- Surge Possible

0 0.5 1 2 3 4 Miles

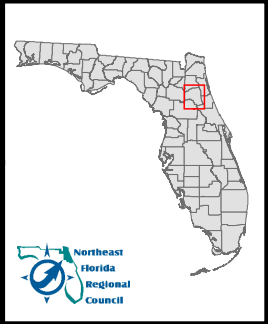
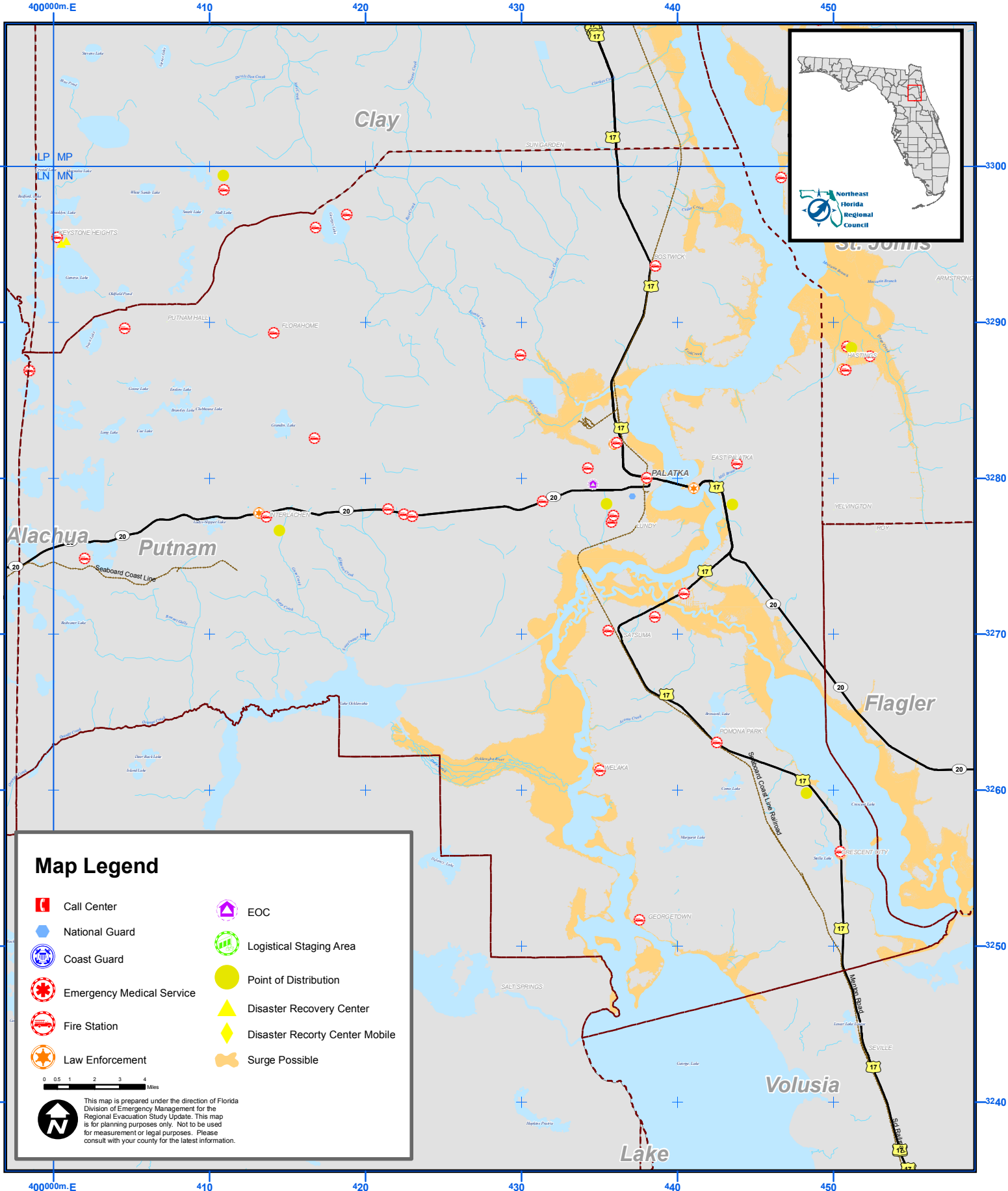
This map is prepared under the direction of Florida Division of Emergency Management for the Regional Evacuation Study Update. This map is for planning purposes only. Not to be used for measurement or legal purposes. Please consult with your county for the latest information.





# Putnam County

## Map IVF - 8 EOCs, Logistics, Military and Emergency Services



### Map Legend

- |  |                           |  |                                 |
|--|---------------------------|--|---------------------------------|
|  | Call Center               |  | EOC                             |
|  | National Guard            |  | Logistical Staging Area         |
|  | Coast Guard               |  | Point of Distribution           |
|  | Emergency Medical Service |  | Disaster Recovery Center        |
|  | Fire Station              |  | Disaster Recovery Center Mobile |
|  | Law Enforcement           |  | Surge Possible                  |

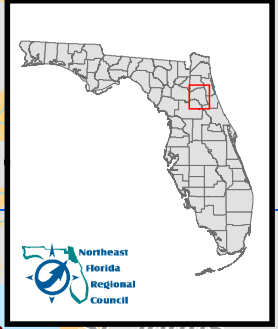
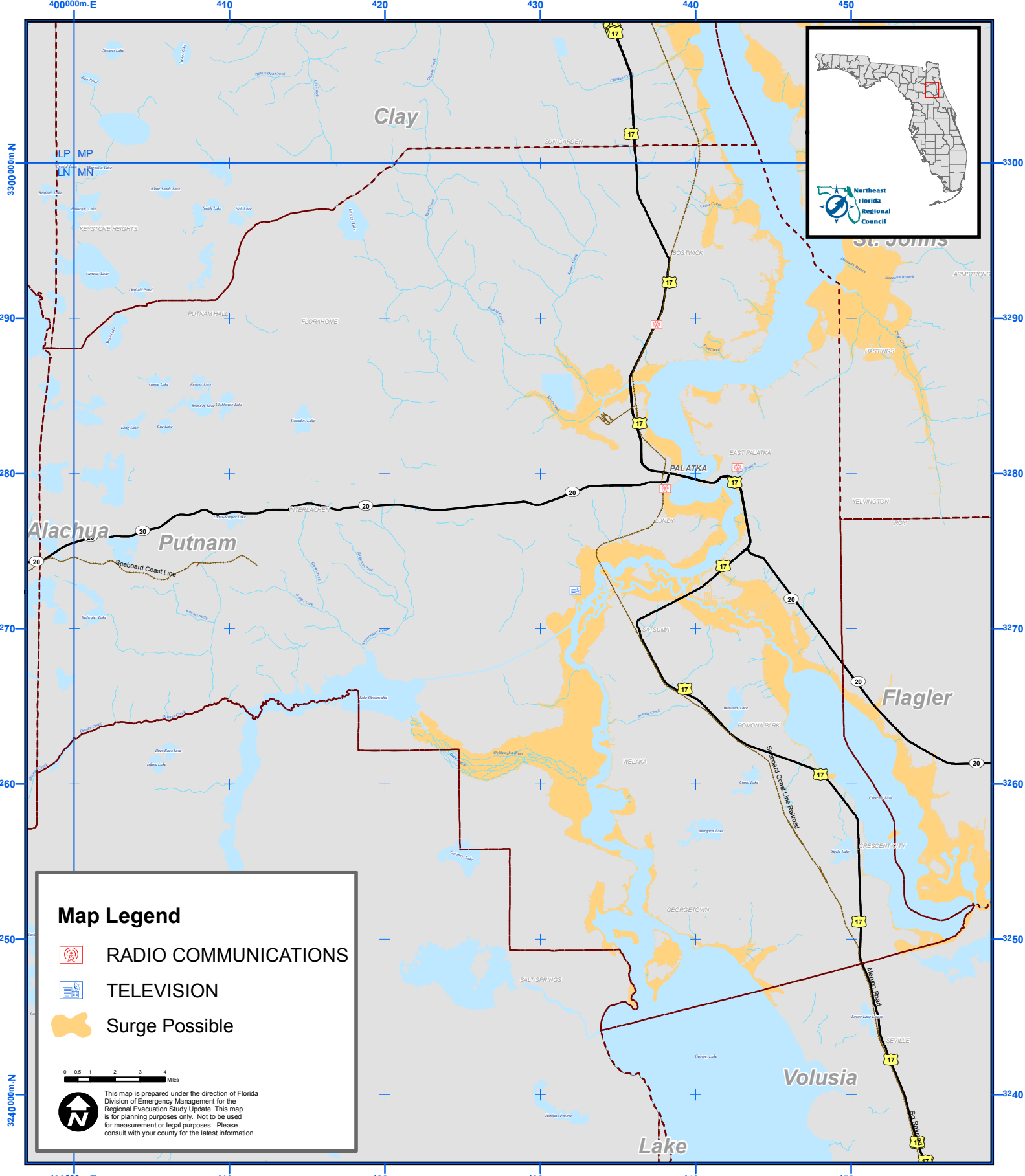
0 0.5 1 2 3 4 Miles

This map is prepared under the direction of Florida Division of Emergency Management for the Regional Evacuation Study Update. This map is for planning purposes only. Not to be used for measurement or legal purposes. Please consult with your county for the latest information.



# Putnam County

## Map IVF - 9 Communications Resources



**Map Legend**

- RADIO COMMUNICATIONS
- TELEVISION
- Surge Possible

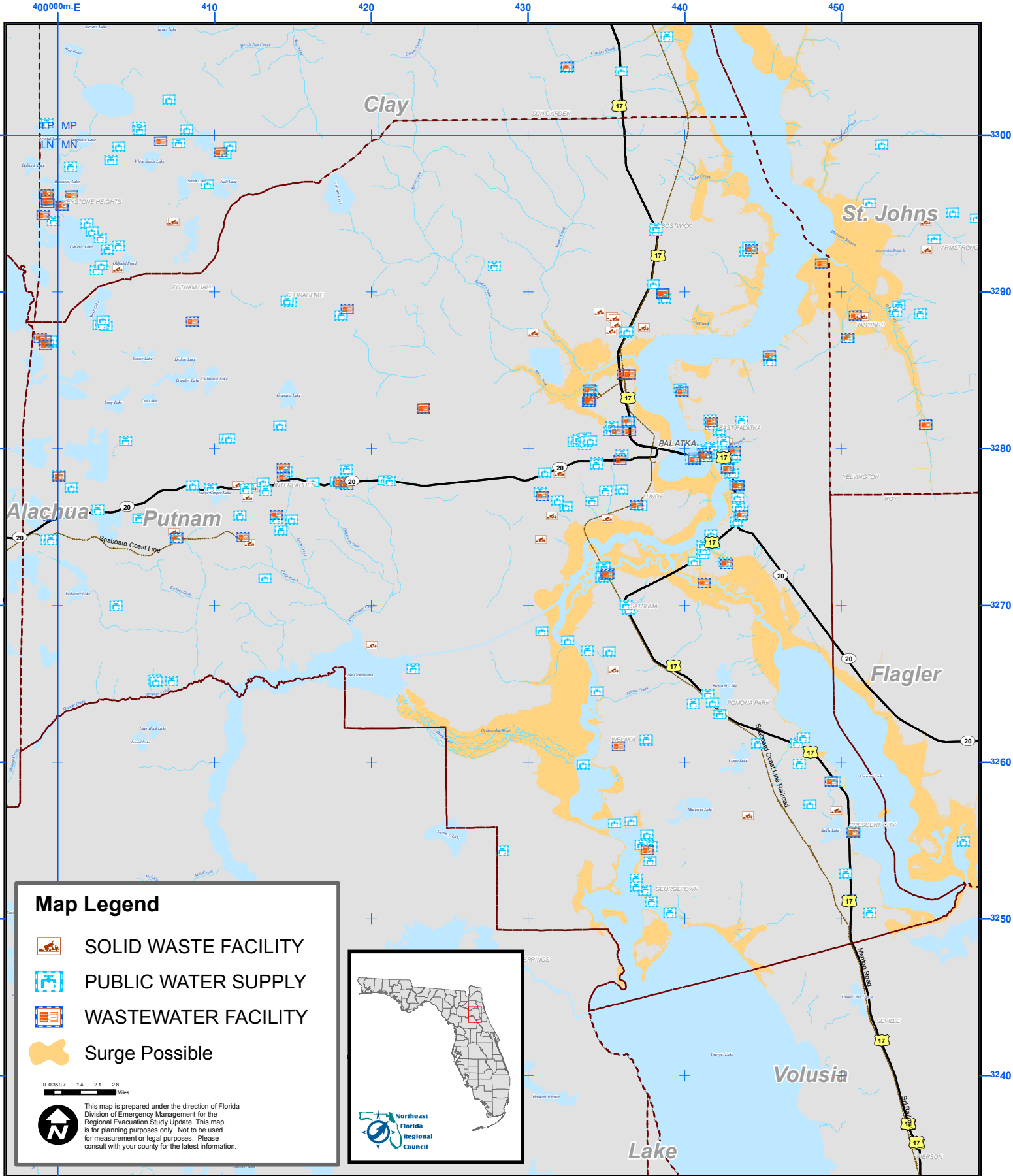
0 0.5 1 2 3 4 Miles

This map is prepared under the direction of Florida Division of Emergency Management for the Regional Evacuation Study Update. This map is for planning purposes only. Not to be used for measurement or legal purposes. Please consult with your county for the latest information.







# Putnam County

## Map IVF - 10 Critical Infrastructure

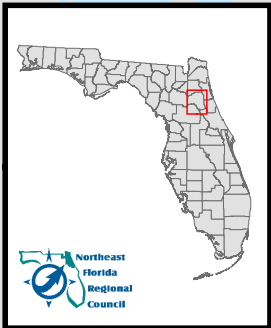


### Map Legend

-  SOLID WASTE FACILITY
-  PUBLIC WATER SUPPLY
-  WASTEWATER FACILITY
-  Surge Possible

0 0.350.7 1.4 2.1 2.8 Miles

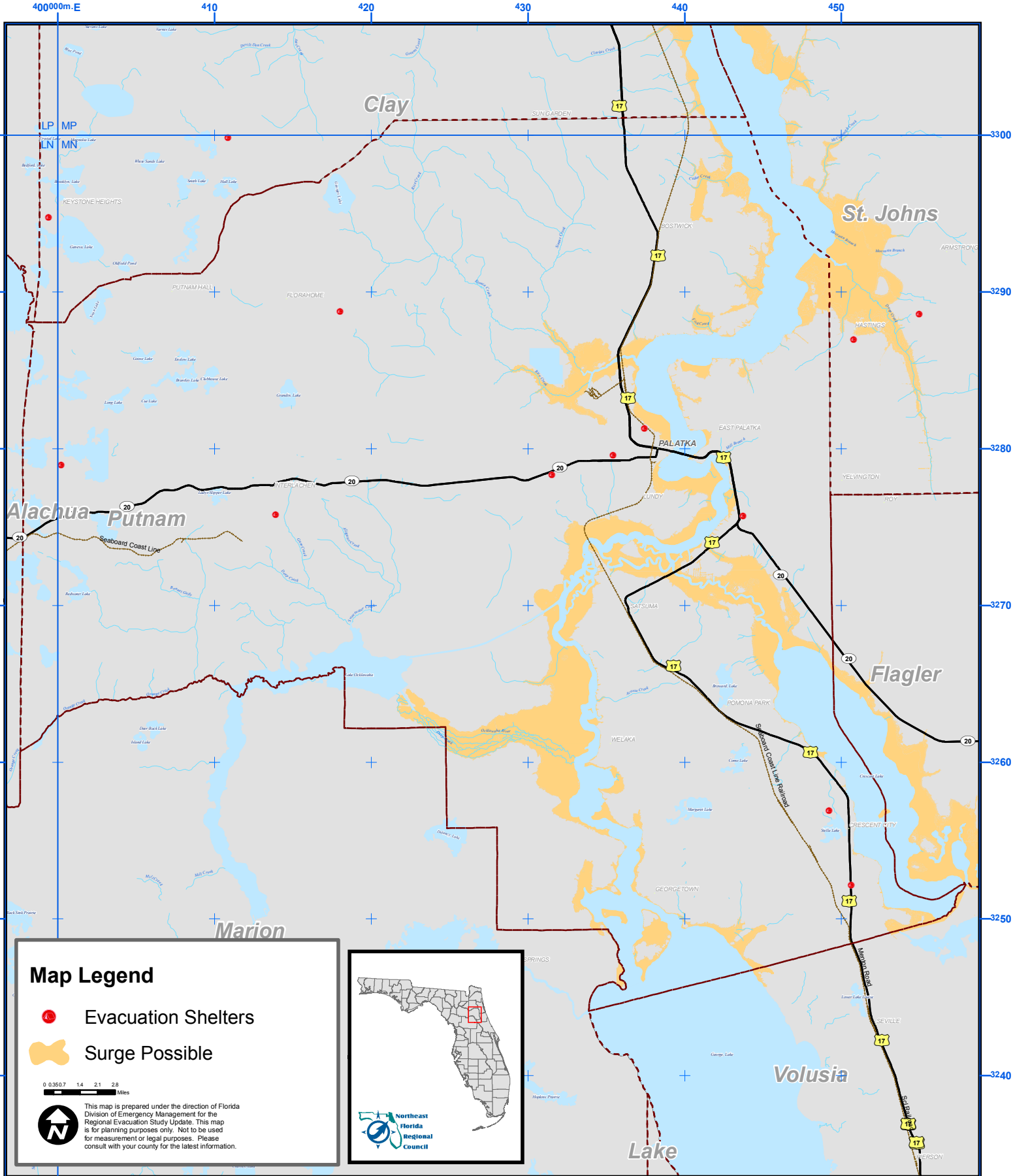
This map is prepared under the direction of Florida Division of Emergency Management for the Regional Evacuation Study Update. This map is for planning purposes only. Not to be used for measurement or legal purposes. Please consult with your county for the latest information.





# Putnam County

## Map IVF - 11 Public Evacuation Shelters



**Map Legend**

- Evacuation Shelters
- Surge Possible

0 0.350.7 1.4 2.1 2.8 Miles

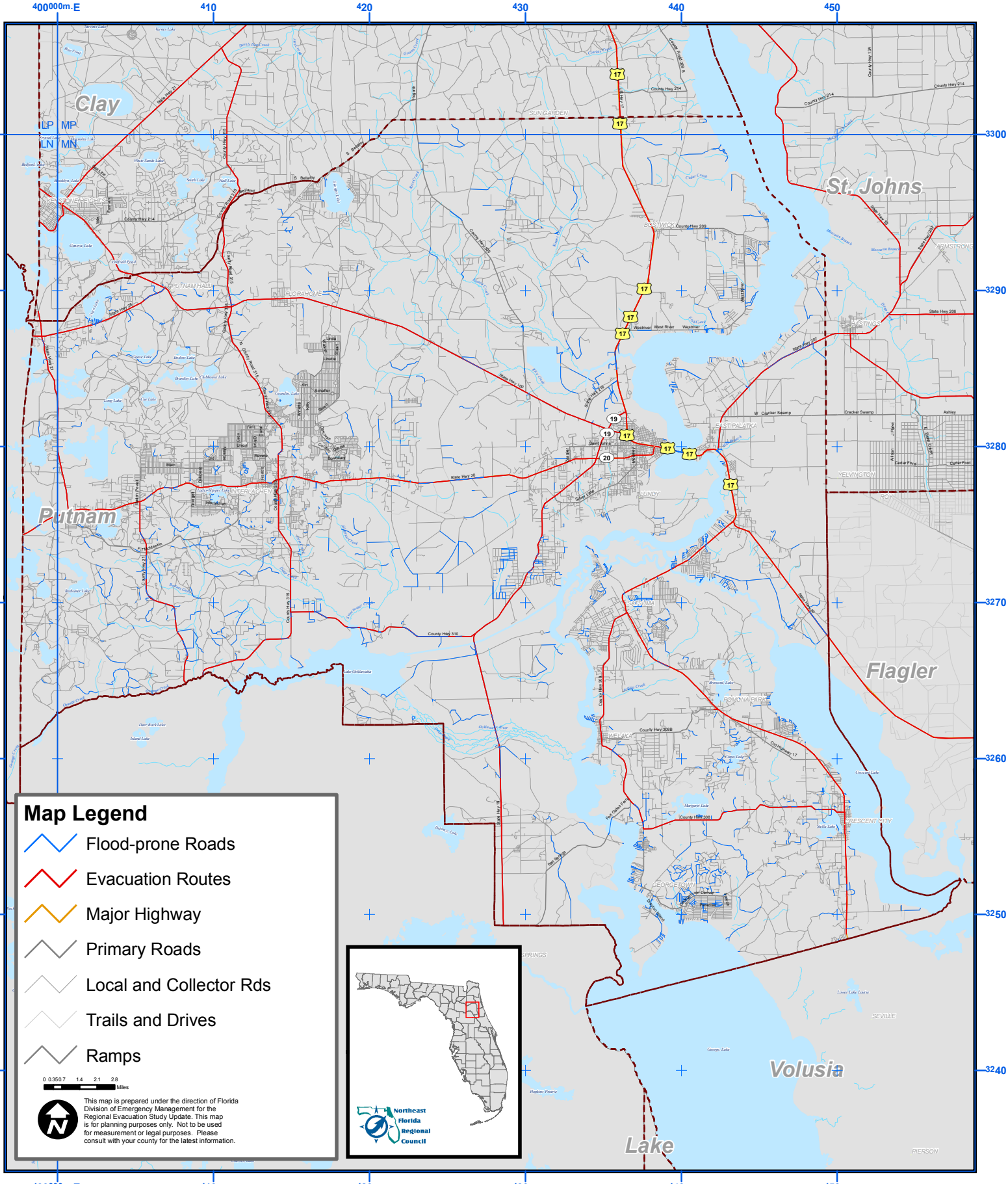
This map is prepared under the direction of Florida Division of Emergency Management for the Regional Evacuation Study Update. This map is for planning purposes only. Not to be used for measurement or legal purposes. Please consult with your county for the latest information.

Northeast Florida Regional Council



# Putnam County

## Map IVF - 12 Routes Vulnerable to Freshwater Flooding



**This page intentionally left blank.**