

# Mitigate FL

## 1<sup>st</sup> Quarter Meeting

Please  
note the  
new  
number!

Tuesday, March 12, 2019  
Director's Conference Room  
1:00-2:00 pm

Audio Information  
Number: 1-888-585-9008  
Passcode: 258-740-256



# Introductions

- Name
- Agency

Not \*6 like  
in the past!

## For Our Friends on the Phone

Please make sure your phone is muted during the meeting.

**To mute / unmute your phone press \*2 •**

**Please DO NOT put your phone on hold.**



# Agenda

- Natural Hazards Interagency Working Group
- USACE Levee Inventory
- Historical and Cultural Preservation
- HMGP Irma and Michael Status
- Mitigation Outreach Strategy
- Watershed Planning Initiative
- LMS Updates and Resources
- Silver Jackets
- SHMPoints



# Natural Hazards Interagency Working Group

- Florida Statute 252.3655 – Annual Report online here:  
<https://portal.floridadisaster.org/mitigation/MitigateFL/External/Forms/AllItems.aspx>
- Membership changes
- Want to meet with each agency annually
  - Describe mitigation actions and determine which goals and objectives they support



# USACE

# Levee Inventory



# NATIONAL LEVEE INVENTORY AND REVIEW FLORIDA

Catherine Sanders  
NLD Program Manager/  
National Inventory Lead

March 2019

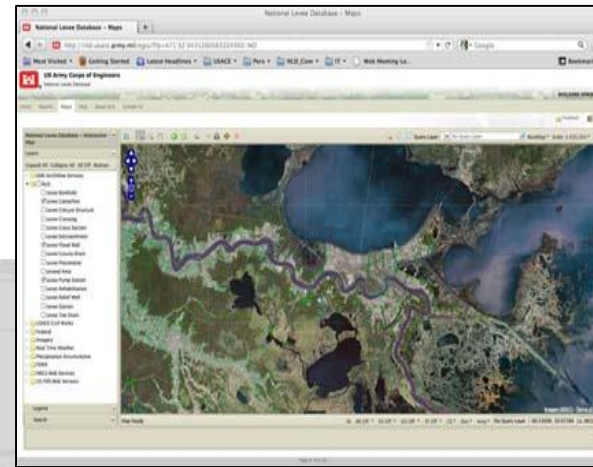
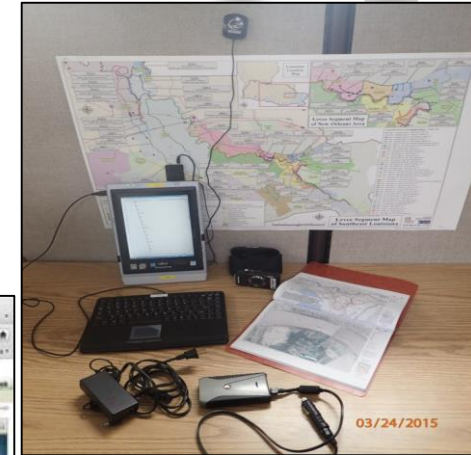




# LEEVE INVENTORY, INSPECTION & RISK ASSESSMENT OF THE NATION'S LEEVES

## ➤ Program Overview

- National effort to inventory and review Nation's levees
- Inventory
  - National Levee Database
- Review
  - Inspection and Risk Assessment Activities
- Risk Framework is central
- Communication and team building



# LEVEE INVENTORY & REVIEW - KEY ACTIVITIES



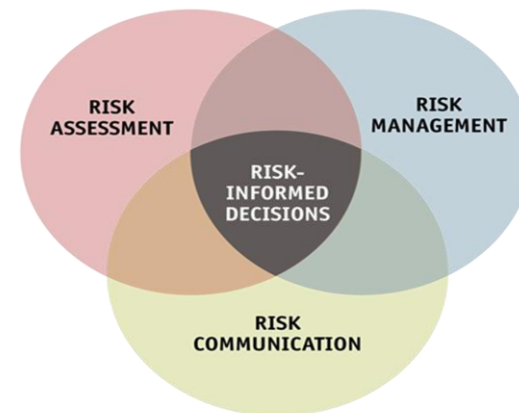
- **Locate:** Upload basic information for all known levees in the National Levee Database
- **Inspect:** Assess the condition of the nation's levees by conducting field inspections
- **Characterize:** Conduct levee risk assessments to evaluate and communicate the nature of flood risk posed
- **Share information.** Develop a levee system summary

**Structure Info**

Total Length	Number of Closure Structures
Minimally Acceptable	May 12 2016
Length of Embankment	Length of Paved
Minimally Acceptable	May 12 2016
Average Height	Year Constructed
14.0 Feet	1954

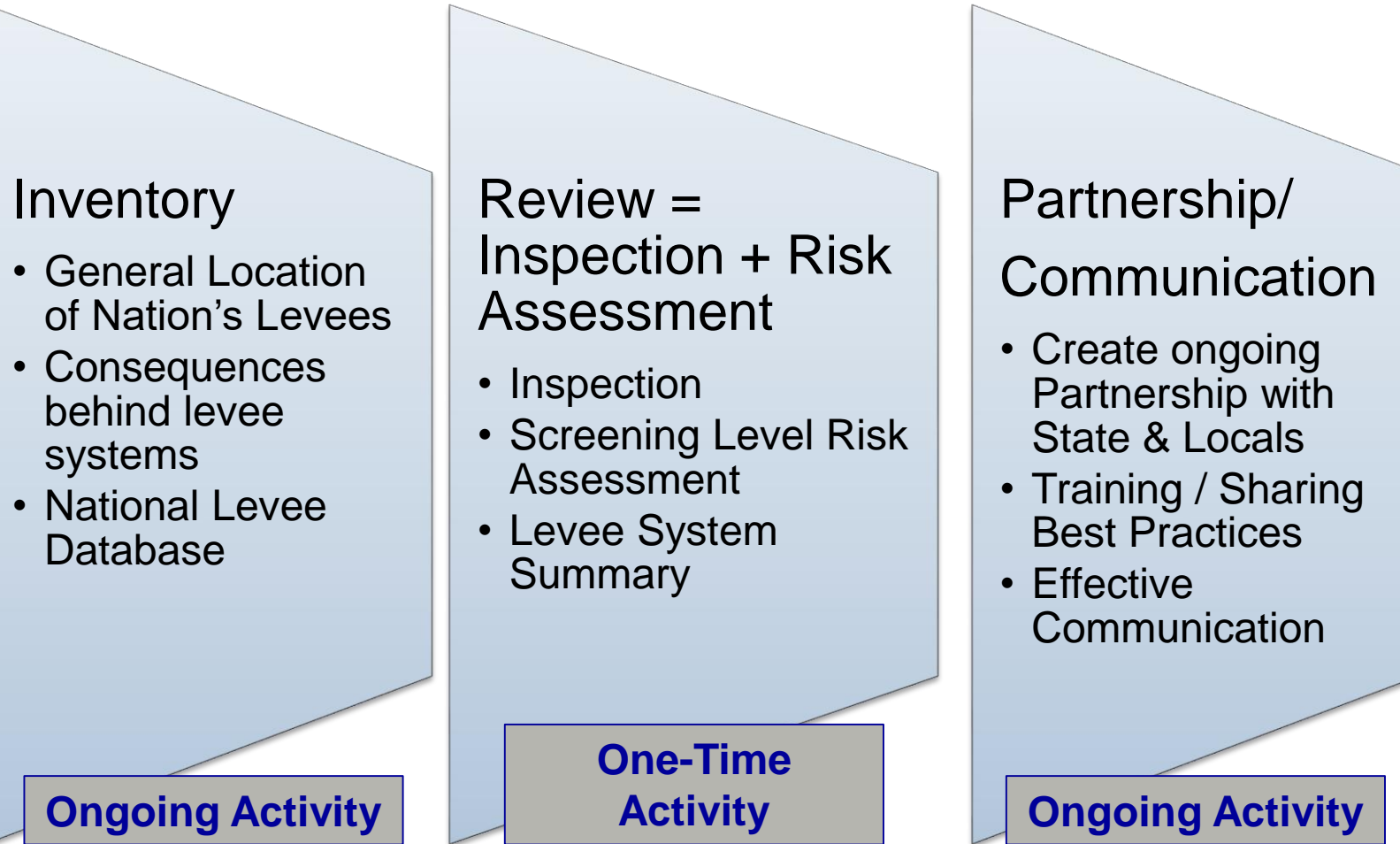
**Risk Characterization**

People	Structures	Economics
1234	567	\$850,1234





# THREE-PHASED APPROACH INVENTORY AND REVIEW



WRRDA 2014 – Title IX, Section 9004



# WHY IS INVENTORY & REVIEW IMPORTANT

- Increase understanding of Risk
- Reduce risk to those that live & work in leveed areas.
- Reduce risk of property & environmental losses
- Encourage the use of appropriate engineering policies, procedures & technical practices
- Improve technical capacity



# BENEFIT: IMPROVE TECHNICAL CAPACITY



- Build inspection, assessment & communication capacity w/in others
- Assist w/ data management (National Levee Database)
- Provide access to tools





# BENEFIT: INCREASE UNDERSTANDING OF RISK

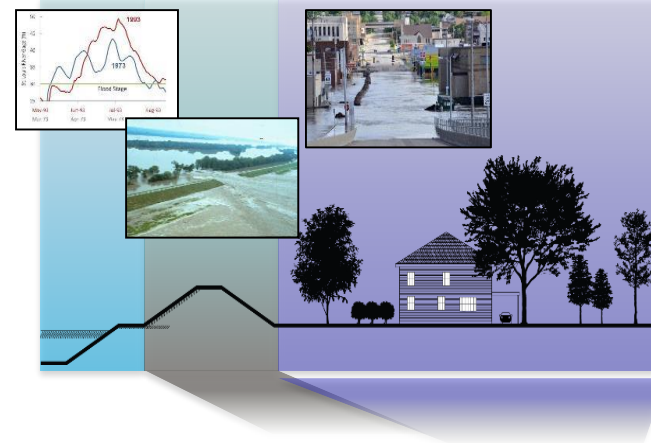
- Establish a baseline understanding of levee condition and risks
- Identify orphan levees
- Inform emergency management efforts
- Identify risk management partners



# LEVEE INVENTORY & REVIEW

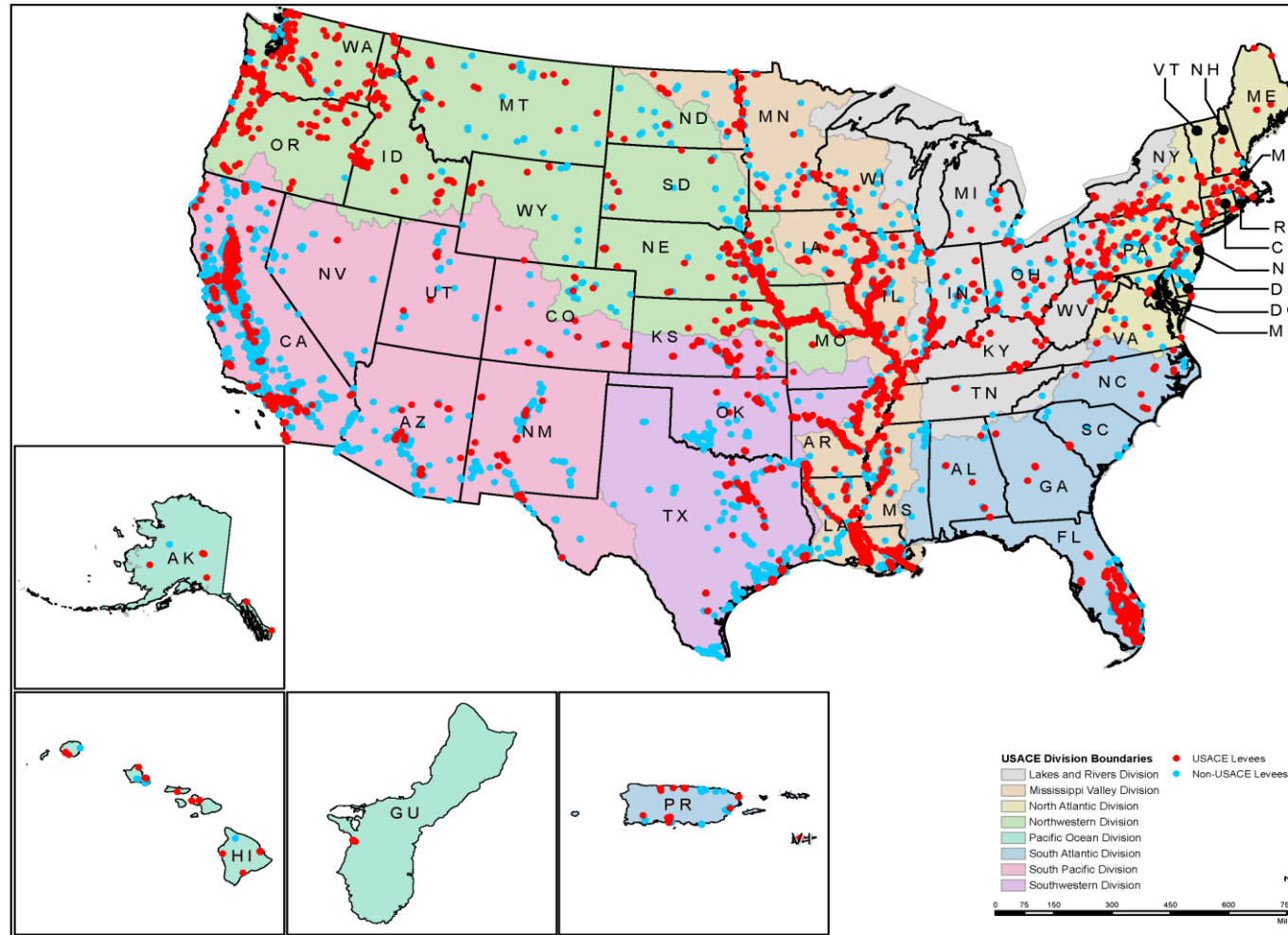
## VALUE TO PARTICIPANTS

- **Help evaluate infrastructure**
  - Location
  - Condition
  - Potential Risks
- **Opportunity to share**
  - Lessons Learned
  - Hands on Training
  - Best Practices with Methodology & Tools
- **Opportunity to align levee safety activities**





# LEVEES IN THE NATIONAL LEVEE DATABASE



**Total Levee Systems = 8,800 / Miles = 28,900**

- USACE Portfolio: Systems = 2,200 / Miles = 14,150
- Non-USACE Systems = 6,600 / Miles = 14,800

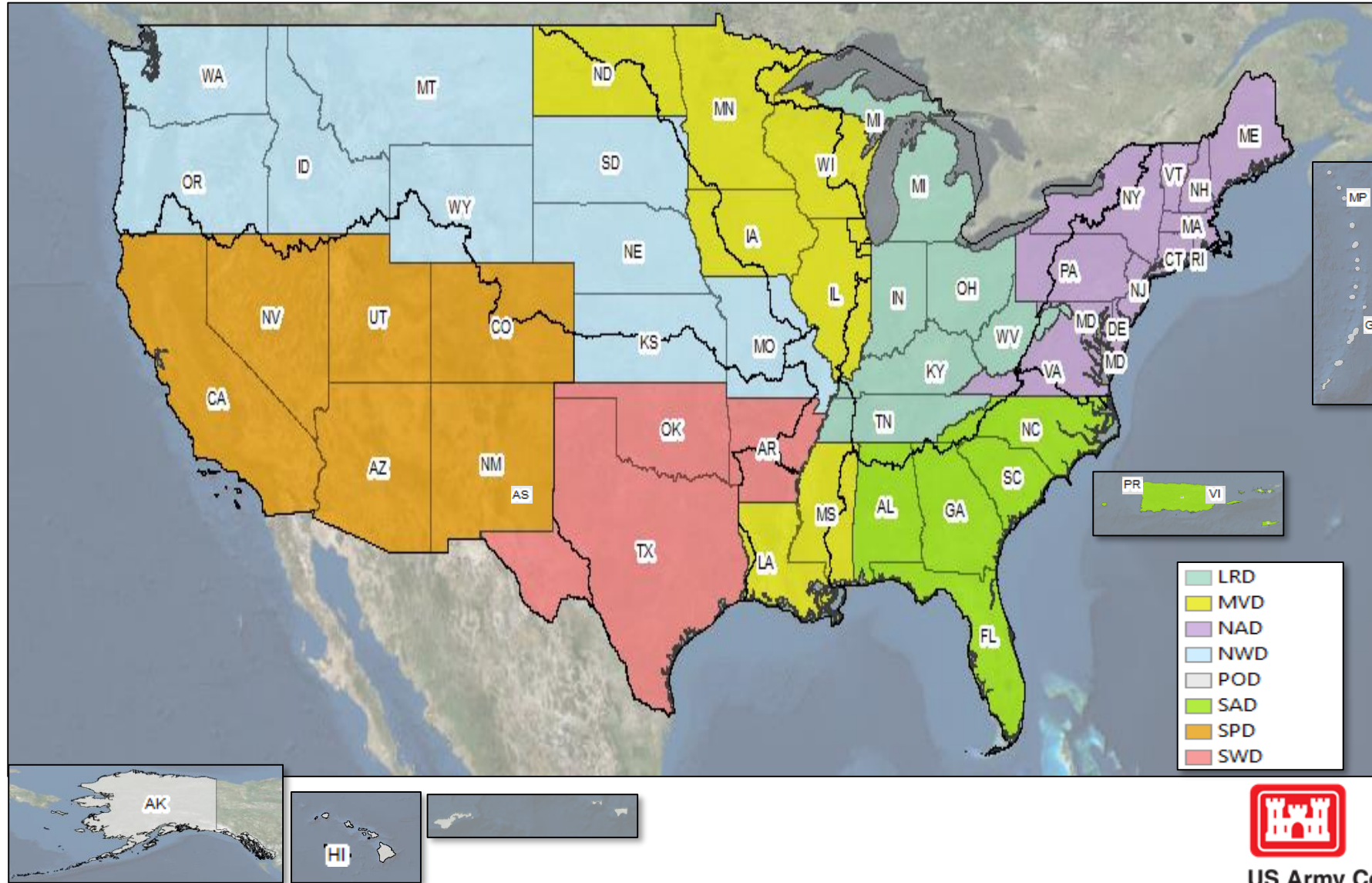


# WHAT LEVEES ARE WE TALKING ABOUT?

Authority/ Portfolio	Miles (Estimated)	Identified in the NLD?	Condition Assessed?	Characterized Benefits and Flood Risks?
Federally authorized, USACE Operated and Maintained	4,000	Yes	Yes	Yes
Federally authorized, USACE Constructed, Local O&M	8,000	Yes	Yes	Yes
Non-USACE levee (locally constructed, local O&M) accepted into USACE Rehabilitation Program (P.L. 84-99)	2,200	Yes	Yes	Yes
Non-USACE levees outside of USACE programs identified from state inventories; FEMA programs;	~15,000	Yes	?	?
Non-USACE levees in state or community not identified	<i>unknown</i>	No	?	?



# National Levee Inventory & Review: Outreach Team Assignments & Progress Through Dec 2018



US Army Corps  
of Engineers®



3/12/19

# FLORIDA LEVEES IN THE NLD

Levees of Florida

161 Levee Systems | 1,241 Miles of Levees | 2,565 Levee Structures | 56 years Average Levee Age

67 USACE	873 USACE
94 Non-USACE	367 Non-USACE

Florida

Back to: The Nation

States and Counties

Select other territory types from the drop-down menu.

Search this list

- Alachua County
- Baker County
- Bay County
- Bradford County
- Brevard County
- Broward County
- Calhoun County
- Charlotte County
- Citrus County
- Clay County
- Collier County
- Columbia County
- DeSoto County

BROWSE THESE LEVEES

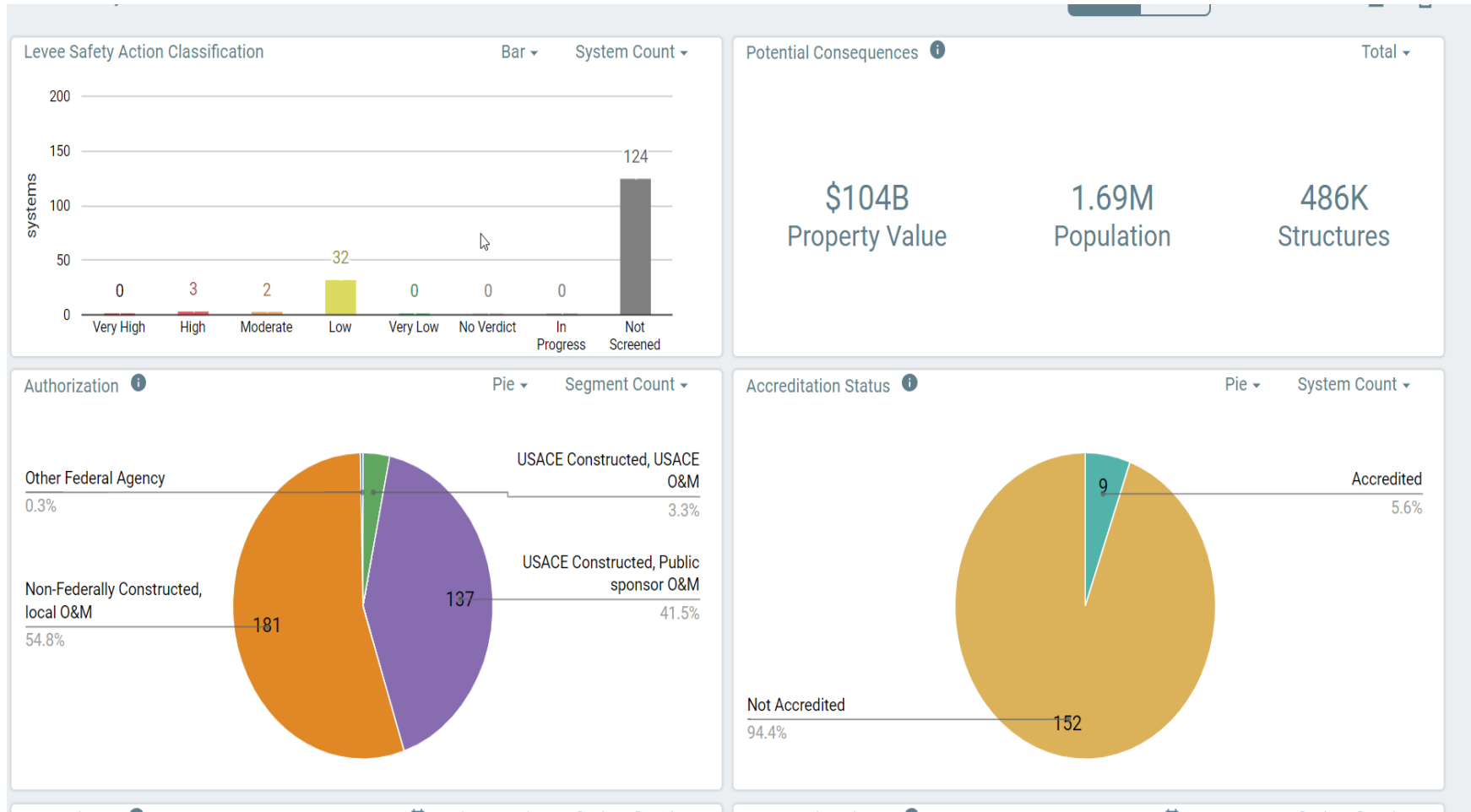
Categorize by

Explore

of Engineers<sup>rps</sup>



# NLD DASHBOARD: FLORIDA



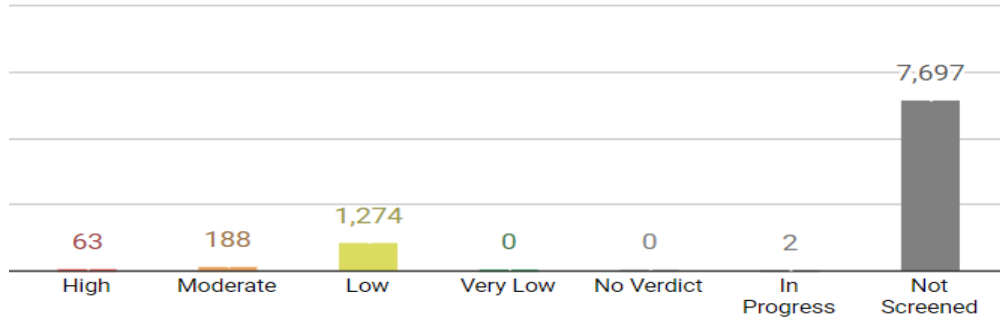
NLD Dashboard; Florida as of March 2019





# NLD NATIONAL DASHBOARD

System Classification Bar System Count



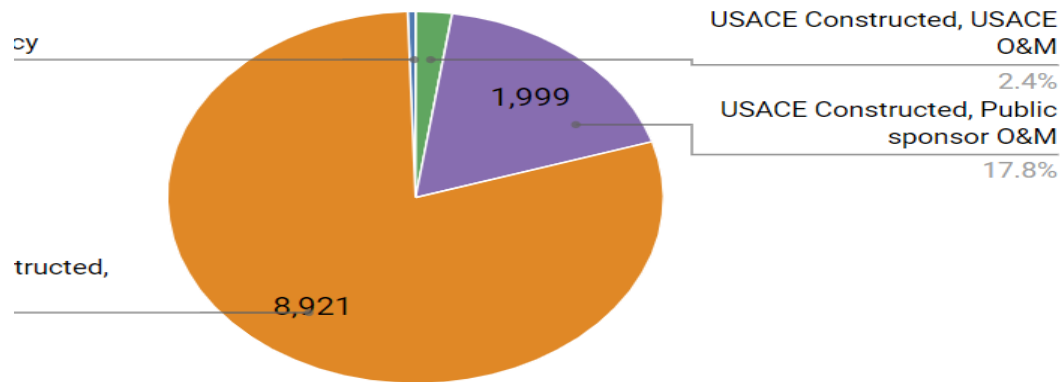
Potential Consequences i Tot

\$2.17T  
Property Value

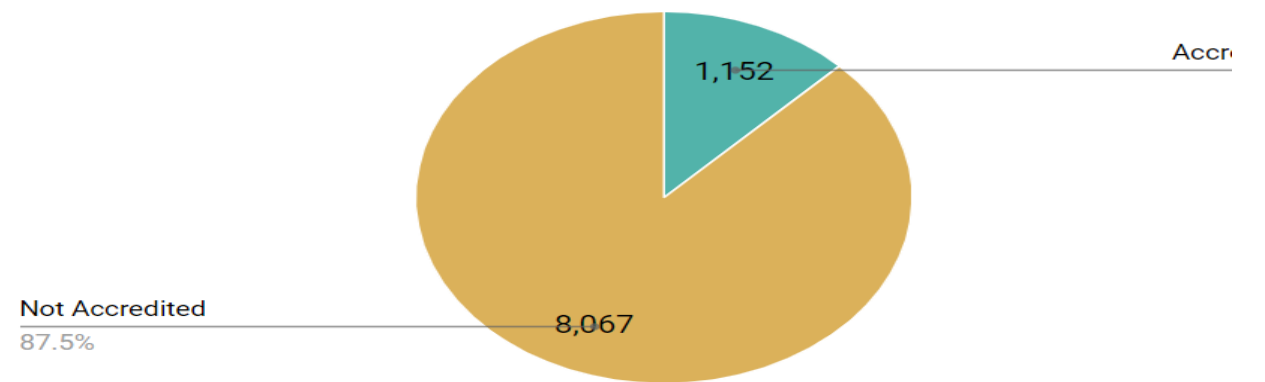
19.4M  
Population

5.52M  
Structures

System Segment Pie Segment Count



Accreditation Status i Pie System Cou



Sep '14 - Dec '18 System Count

Construction History i 1881 - 2048 System Cou

NLD National Dashboard as of March 2019



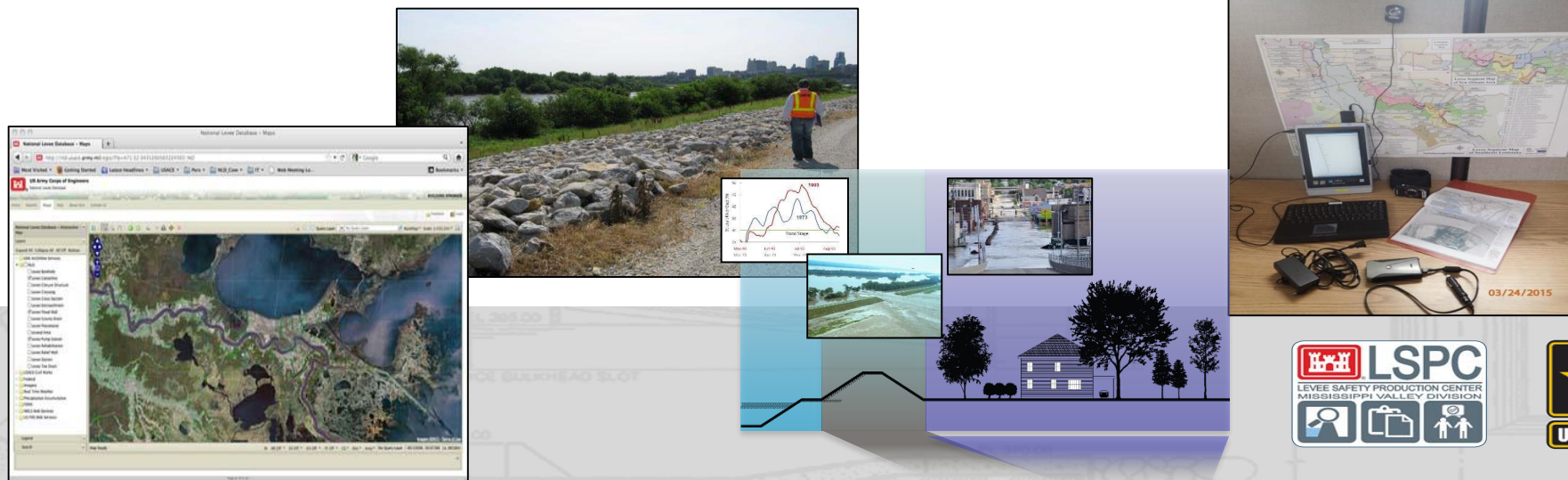
US Army Corps of Engineers®



U.S. ARMY

# LEEVE INVENTORY AND REVIEW STATUS

- **FY 2018**
  - Initiated discussion in almost every State
  - Inventory and Review activities in approximately 20 States
  - Initiated 99 levee Inspections
  - Prioritized 165 levee systems for upcoming inspection/review activities
- **FY 2019**
  - Focus on non-USACE segments aligned with USACE levee segments.
  - USACE continues to refine/add information to NLD
  - Continue to prioritize levee systems for Review Activities
- **FY 2020**
  - Funding dependent activities



# LEEVE INVENTORY AND REVIEW GOALS



**Improve national investment & management decisions** by identifying critical issues and quantifying the nation's exposure

**Share best practices, procedures, & tools** for levee inventory, inspection, and risk assessments

**Help evaluate infrastructure** (location, condition, potential risks, vulnerability and exposure of consequences)

# CONTACTS AND INFORMATION



Almur Whiting  
Almur.S.Whiting@usace.army.mil

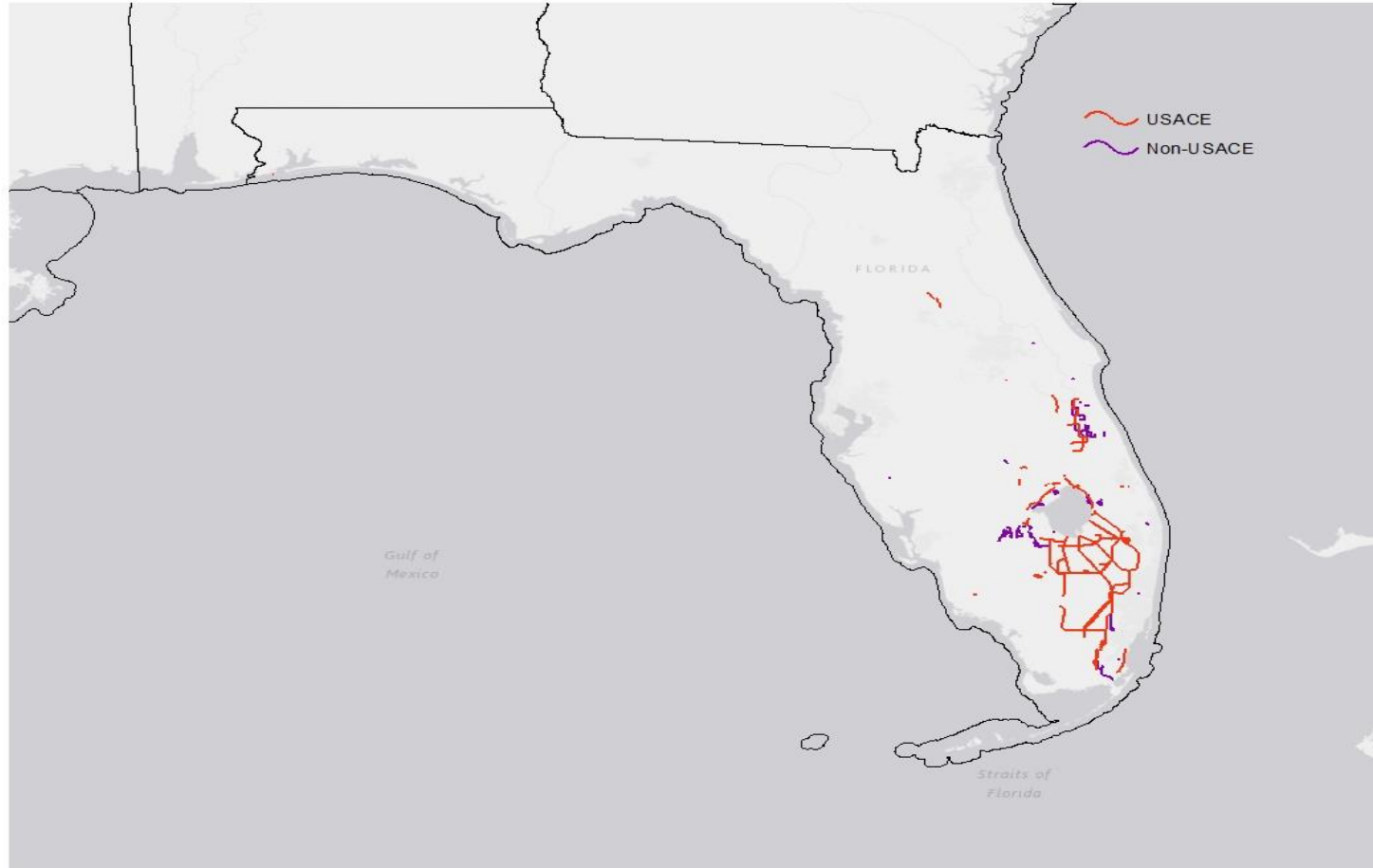
Catherine Sanders  
Catherine.R.Sanders@usace.army.mil

NLD Website:  
<https://levees.sec.usace.army.mil>

Help Desk Support:  
DLL-CEERD-NLD-General-  
Support@usace.army.mil



# FLORIDA LEVEES IN NLD



USACE and Non USACE NLD Levee systems as of March 2019



US Army Corps  
of Engineers®





# Florida Department of State Division of Historical Resources

THE FLORIDA DIVISION OF EMERGENCY MANAGEMENT



# Historical and Cultural Preservation

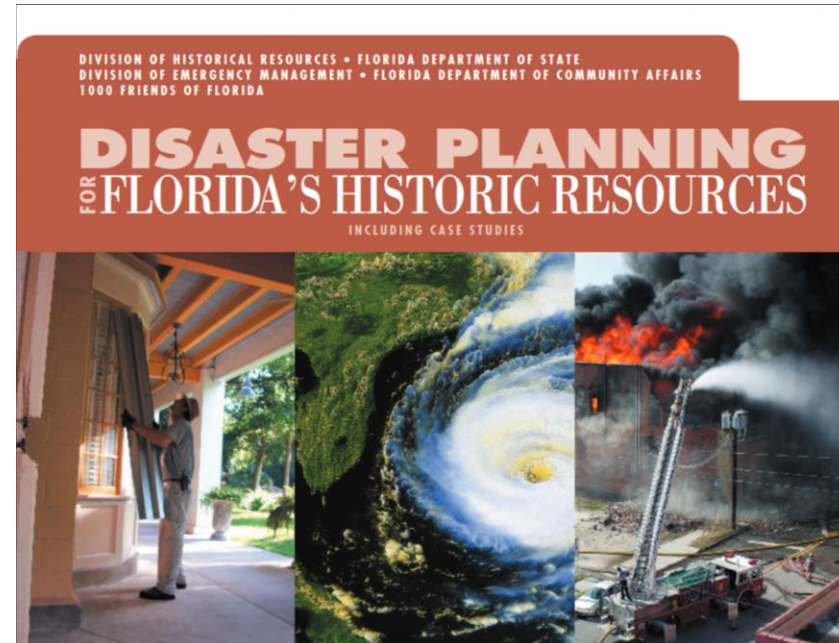
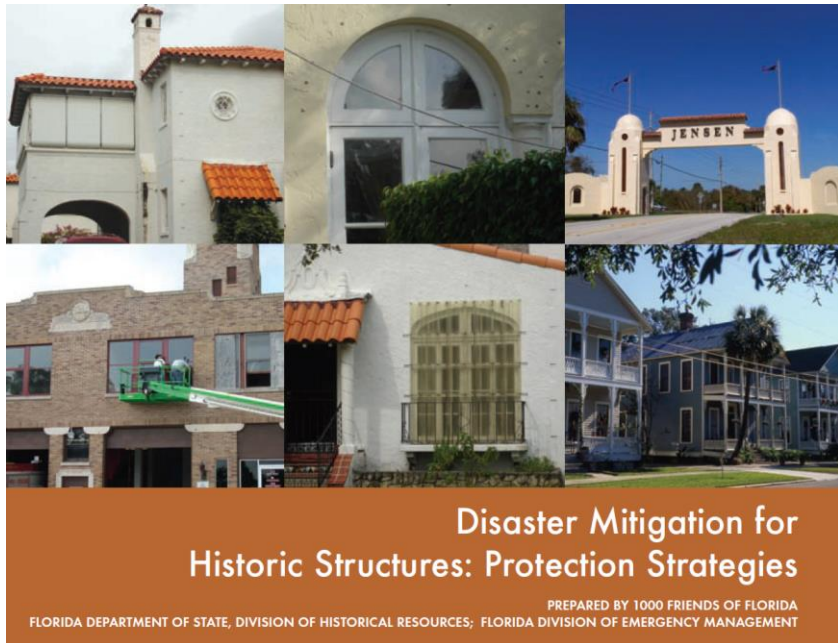
## Florida Division of Historical Resources

- 2019 Hurricane Irma National Park Service Subgrants
  - Eligible Applicants:
    - Non-profit organizations
    - Municipal and County Governments
    - Other Local Governments
    - State Universities, Community Colleges, and private universities
    - State Agencies
- Maximum award amount: \$500,000
- No Match Requirement
- [www.flheritage.com/grants](http://www.flheritage.com/grants)



# Historical and Cultural Preservation

- Updating our 2006 and 2008 documents
  - “Bricks and Mortar” Disaster Preparation and Recovery
  - Disaster Planning and Policy for Historic Properties



# Historical and Cultural Preservation

## Eligible applicants:

- Public entities such as:
  - counties or municipalities,
  - school districts, state colleges or universities,
  - agencies of state government
- Non-profit organizations

## Ineligible applicants:

- For-profit organizations
- Individuals
- Private residences





# Historical and Cultural Preservation

## Project types:

- Survey
- Planning
- National Register Nomination
- Education and Publication
- Main Street Start-Up
- Historical Marker

NOTE: The project site has to be open and regularly accessible to the general public.



# Historical and Cultural Preservation

## City of Cedar Key's Digital Flood Vulnerability Assessment



THE FLORIDA DIVISION OF EMERGENCY MANAGEMENT



# Historical and Cultural Preservation

- Grant Application Cycle
  - Submission Period Opens: April 1, 2019
  - Submission Period Closes: June 1, 2019 at 5:00 PM EST
- Funding Availability:
  - Applications will be evaluated on a competitive basis and the selected projects will be awarded funds for the following fiscal year (July 1, 2020).
- Funding for state Small Matching grants is contingent upon an annual appropriation by the Florida Legislature.
- The Small Matching Guidelines can be found on the grants webpage:
  - <http://dos.myflorida.com/media/699169/small-matching-grant-guidelines.pdf>
- Application Website:

The DOS Grants online system can be accessed at [www.DOSgrants.com](http://www.DOSgrants.com).



# Historical and Cultural Preservation

## Florida Division of Historical Resources

- Contact Info:
  - Jason Aldridge, Compliance and Review Supervisor
    - [Jason.Aldridge@dos.myflorida.com](mailto:Jason.Aldridge@dos.myflorida.com) or 850-245-6333
  - Tim Knoepke, Historic Preservation Grants Program Supervisor
    - [Timothy.Knoepke@dos.myflorida.com](mailto:Timothy.Knoepke@dos.myflorida.com) or 850-245-6393





# HMGP Irma Status

- Application reviews are still underway
- Requests for Information (RFI) and your Point of Contacts
- Questions about your applications?



# HMGP Michael Status

- Still awaiting estimate from FEMA before publishing Notice of Funding Availability (NOFA)
  - In-Person Workshops won't be scheduled until NOFA is released
- LMS Updates and Pre-NOFA Prep
- Those counties not declared (Tier 3) may apply now
- State-wide Applicant Briefing Webinar
  - Slides and Q&A available



# HMGP Contacts

## Program Eligibility

Kathleen Marshall  
(850)815-4503

[Kathleen.Marshall@em.myflorida.com](mailto:Kathleen.Marshall@em.myflorida.com)

Jared Jaworski  
(850)815-4537

[Jared.Jaworski@em.myflorida.com](mailto:Jared.Jaworski@em.myflorida.com)

## Technical

Luz Bossanyi  
(850)815-4573

[Luz.Bossanyi@em.myflorida.com](mailto:Luz.Bossanyi@em.myflorida.com)

## Environmental

Paula Catledge  
(850)815-4575

[Paula.Catledge@em.myflorida.com](mailto:Paula.Catledge@em.myflorida.com)

## Engineering

Claudia Lozano  
(850)815-4576

[Claudia.Lozano@em.myflorida.com](mailto:Claudia.Lozano@em.myflorida.com)



# Mitigation Outreach Strategy

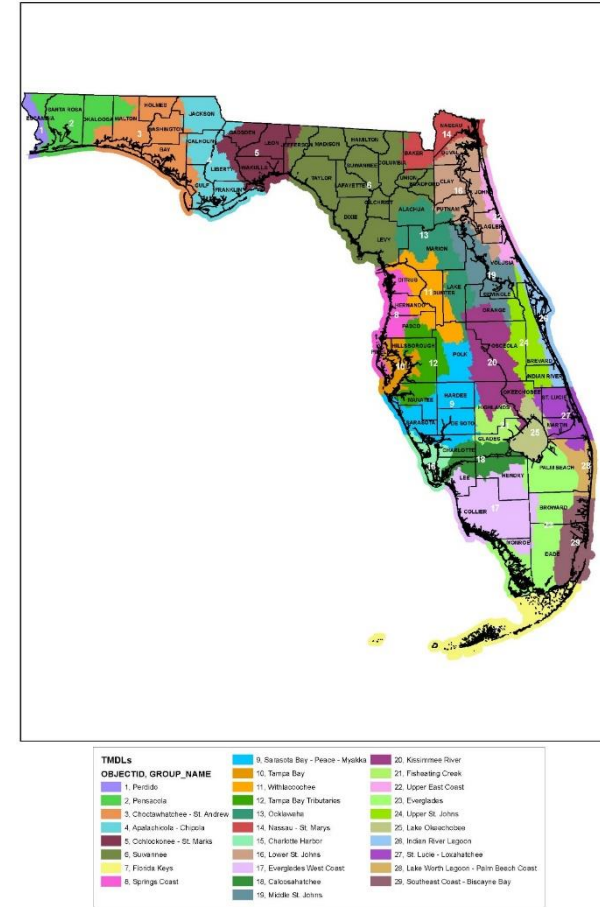
- Mitigation Outreach Subcommittee
  - Determine type of outreach, methods, content, schedule, etc.
  - Brianna Beynart will lead this group
  - Please contact her if you are interested in joining the subcommittee!
  - Kick off meeting will be scheduled soon
- Contact:
  - Brianna Beynart, HLMP Manager
  - 850-815-4516
  - [Brianna.Beynart@em.myflorida.com](mailto:Brianna.Beynart@em.myflorida.com)





# Watershed Planning Initiative

- Create and Update Watershed Management Plans for all 29 Watersheds in Florida
- Working with Water Management Districts to collect data
- Currently working with universities on creating plans

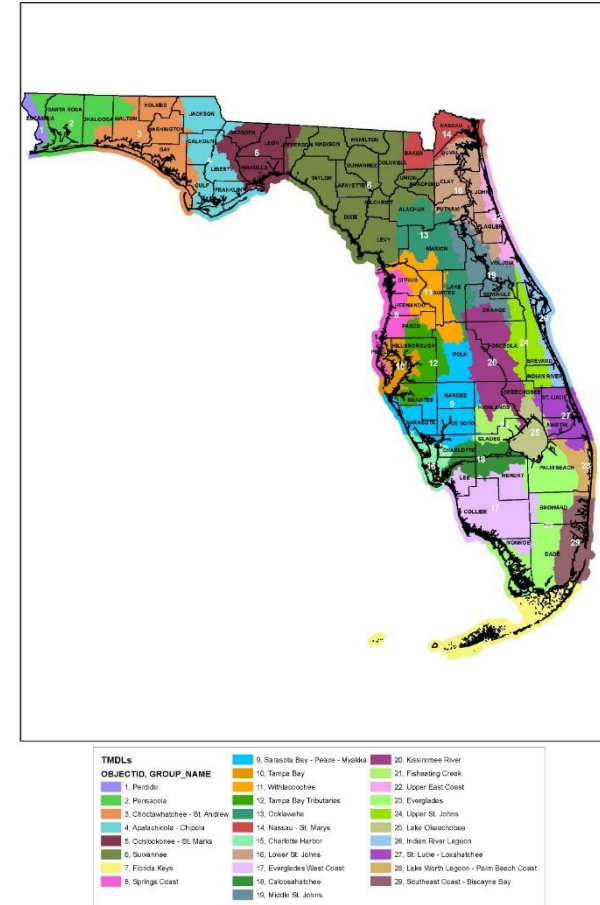


[https://floridadep.gov/sites/default/files/FL\\_Watersheds%20Map\\_0.pdf](https://floridadep.gov/sites/default/files/FL_Watersheds%20Map_0.pdf)



# Watershed Planning Initiative

- Goals
  - Help communities guide future mitigation projects
  - Help communities move up in CRS
  - Uniform plans across the state



[https://floridadep.gov/sites/default/files/FL\\_Watersheds%20Map\\_0.pdf](https://floridadep.gov/sites/default/files/FL_Watersheds%20Map_0.pdf)



# Watershed Planning Initiative

- March 6 – 7 meeting with Universities and Water Management Districts
- Steering Committee
- Working Groups
- Administrative Group



# Watershed Planning Initiative

- Steering Committee
  - Help guide the project and ensure consistent deliverables
- Working Groups
  - Help make decisions on how certain goals and parts of the WMPs will be done
- Administrative Groups
  - Universities develop the WMPs



# Watershed Planning Initiative

## Contact:

- Alexandra Boswell
- 850-815-4514
- [Alexandra.Boswell@em.myflorida.com](mailto:Alexandra.Boswell@em.myflorida.com)





# LMS Updates

- No plans being reviewed
  - Pasco County is in revisions
- No expired plans



# GIS Tools for LMS

- LMS Risk Assessment Update
  - SHMP data is available for your use
    - Section 3
    - Appendix E
- If you need assistance with your risk assessment, you can submit specific requests (i.e. probability of lightning) and I will work with FDEM GIS Unit to get you the data or maps that you need



# Silver Jackets

- Updated Charter under review
- Establishing new federal agency contacts
- Will be scheduling official signing of the new charter and a kickoff meeting for later this year

## Contact:

- Amy Peterson
- 850-815-4511
- [Amy.Peterson@em.myflorida.com](mailto:Amy.Peterson@em.myflorida.com)



# SHMPoints Newsletter

- Topics this month include:
  - FDEM Welcomes New Director
  - Employee Spotlight
  - FDEM Begins Watershed Master Planning Initiative
  - Excerpt from Mitigation Assessment Team Report: Hurricane Irma in Florida



# Announcements

- Meeting notes and materials will be available online
- Next Mitigate FL Meeting
  - Tuesday, June 11, 2019
  - 1:00 pm – 2:00 pm
  - Kelley Training Room, FDEM





# Questions or Comments?

For any additional questions, suggestions  
or comments please contact:

Laura Waterman

[Laura.Waterman@em.myflorida.com](mailto:Laura.Waterman@em.myflorida.com)

850-879-0872

