



Overview of ESF 4&9 Fire Fighting and Search & Rescue

Jimmy Patronis, CFO/State Fire Marshal

Julius Halas, Director of State Fire Marshal

Melvin Stone, Asst. Director/Alternate ECO

Wayne Watts, ESF 4&9 Coordinator/Alternate ECO

John Kohnke, Domestic Security/Alternate ECO

FLORIDA EMERGENCY SUPPORT FUNCTIONS



ESF 1 TRANSPORTATION
Department of Transportation



ESF 2 COMMUNICATIONS
Department of Management Services,
Enterprise Information Technology



**ESF 3 PUBLIC WORKS
AND ENGINEERING**
Department of Transportation



ESF 4 FIREFIGHTING
Department of Financial Services,
Division of State Fire Marshal



ESF 5 PLANS
Division of Emergency Management



ESF 6 MASS CARE
Department of Business and
Professional Regulation,
Department of Children and Families



ESF 7 RESOURCE MANAGEMENT
Department of Management Services,
Division of Purchasing



ESF 8 HEALTH AND MEDICAL
Department of Health



ESF 9 SEARCH AND RESCUE
Department of Financial Services,
Division of State Marshal



**ESF 10 HAZARDOUS MATERIALS
AND ENVIRONMENTAL
PROTECTION**
Department of Environmental Protection



ESF 11 FOOD AND WATER
Department of Agriculture &
Consumer Services



ESF 12 ENERGY
Public Service Commission and
Florida Energy and Climate Commission



ESF 13 MILITARY SUPPORT
Department of Military Affairs,
Florida National Guard



ESF 14 EXTERNAL AFFAIRS
Division of Emergency Management,
Executive Office of the Governor



**ESF 15 VOLUNTEERS AND
DONATIONS**
Governor's Commission on Volunteerism
and Community Service
(Volunteer Florida)



**ESF 16 LAW ENFORCEMENT
AND SECURITY**
Department of Law Enforcement



**ESF 17 ANIMAL AND
AGRICULTURAL ISSUES**
Department of Agriculture and
Consumer Services



**ESF 18 BUSINESS, INDUSTRY AND
ECONOMIC STABILIZATION**
Office of Tourism, Trade, and Economic
Development and Department of Revenue



- ESF 1 Transportation - FDOT
- ESF 2 Communications – DMS
- ESF 3 Public Works - FDOT
- ESF 4 Firefighting – DFS/SFM
- ESF 5 Information and Planning – DEM
- ESF 6 Mass Care - American Red Cross
- ESF 7 Unified Logistics – DEM
- ESF 8 Health and Medical – DOH
- ESF 9 Search and Rescue – DFS/SFM
- ESF 10 Hazardous Materials – DEP
- ESF 11 Food and Water – DOACS
- ESF 12 Energy – PSC
- ESF 13 Military Support – FNG
- ESF 14 Public Information – EOG/DEM
- ESF 15 Volunteers and Donations – Volunteer Florida
- ESF 16 Law Enforcement – FDLE
- ESF 17 Animal Protection – DOACS
- ESF 18 Business and Industry - DEO

Structure and Authority

Division of State Fire Marshal (SFM) is the primary agency for ESF 4 Firefighting, and ESF 9 Urban Search & Rescue

SFM Director serves as the primary ESF 4&9 Emergency Coordinating Officer (ECO)

Operational responsibility is delegated to the ESF 4&9 Coordinator, with alternates 4 deep

ESF 4&9 PARTNERING AGENCIES



Department of Agriculture and Consumer Services - Florida Forest Service (FDOACS-FFS) *(Wildland and Incident Management Teams)*



Florida Fire Chiefs' Association (FFCA) *(Structural Firefighting, Search & Rescue, Hazardous Materials and Mutual Aid Radio Caches)*



Florida Department of Health (FDOH) *(Ambulance Strike Teams)*



Florida Fish and Wildlife Conservation Commission (FWC) *(Search & Rescue and Security Support)*

ESF 4&9 PARTNERING AGENCIES cont



Bureau of Fire and Arson Investigations (BFAI) (*Search & Rescue and Security Support*)



Department of Environmental Protection (DEP) (*Hazardous Materials*)



Florida National Guard (FNG) (*Search & Rescue and Hazmat Support*)



Florida Wing of the Civil Air Patrol (F-CAP) (*Aerial recon & photography*)

State of Florida Assets

- The State has limited structural firefighting and specialized resources
- Local resources are requested in accordance with the Statewide Emergency Response Plan (SERP)
- The Florida Fire Chiefs' Association SERP Committee maintains the plan and database of statewide assets
- Activation orders come from ESF 4&9 and approved by the ECO on duty under the authority of the CFO/State Fire Marshal
- FFS has the lead in wildland fires, ESF 4&9 SFM/FFCA SERP provides support and coordination of structural assets.

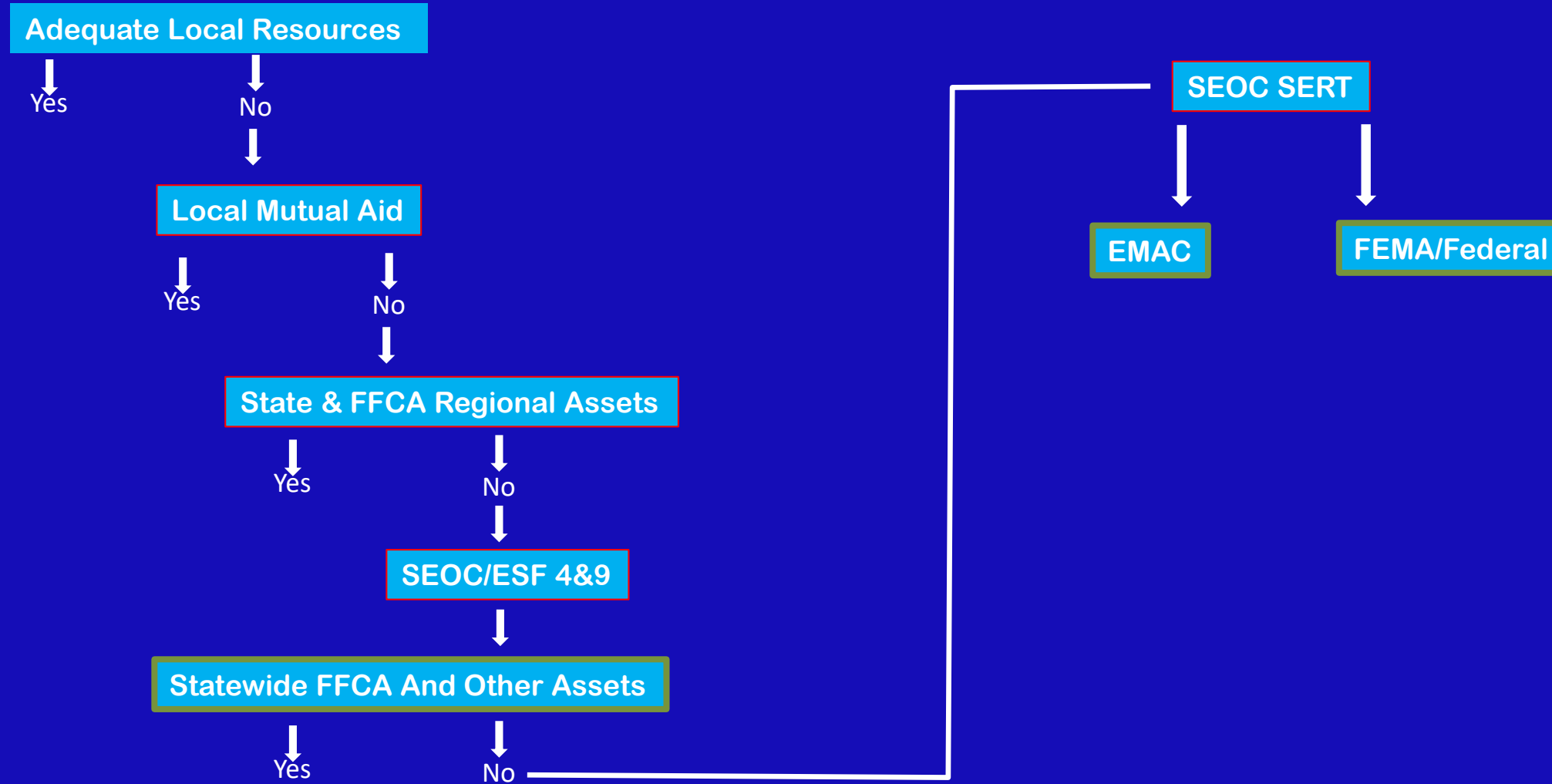
FINANCIAL CONSIDERATIONS

- Local Responses/Regional Mutual Aid
 - Requesting jurisdiction typically responsible for costs
- Substantial Local Emergencies
 - SFM/DFS or DEM “may” authorize response with subsequent reimbursement costs for deployed resources
- Cost for Out of Region Resources
 - Responsibility of the requesting agency

FINANCIAL CONSIDERATIONS

- Catastrophic Threats/Impacts
 - Governor issues an Executive Order
 - Primary agency for the responding State ESFs will usually assume cost of mobilizing assets

IMPACT IMMINENT /OCCURS



DISCUSSION